

REGIONAL WATER BOARD INDUSTRIAL STORMWATER INSPECTION PROGRAM

MAGGIE MONAHAN - *SENIOR WATER RESOURCE CONTROL ENGINEER*
San Francisco Bay Regional Water Quality Control Board

JOSEPH MONICAL – *WATER RESOURCE CONTROL ENGINEER*
San Francisco Bay Regional Water Quality Control Board



PRESENTATION OUTLINE

- Industrial Stormwater General Permit Intro
- Regional Water Board Industrial Inspection Prioritization
- Inspection Focus Items
- Case Examples
- Coordination

INDUSTRIAL STORMWATER GENERAL PERMIT

NATIONAL POLLUTANT DISCHARGE ELIMINATION SYSTEM (NPDES)

ORDER WQ 2014-0057-DWQ,
AS AMENDED BY ORDER WQ 2015-0122-DWQ &
ORDER WQ 2018-0028-DWQ

GENERAL PERMIT FOR
STORM WATER DISCHARGES
ASSOCIATED WITH INDUSTRIAL ACTIVITIES

ORDER
NPDES NO. CAS000001

- Regulates stormwater discharges from industrial facilities
 - Manufacturing, disposal, recycling, transportation facilities
- Over 2,300 facilities enrolled in San Francisco Bay region

APPLYING FOR PERMIT COVERAGE

- Applications submitted via the Stormwater Multiple Application and Report Tracking System (SMARTS)

The screenshot shows the homepage of the SMARTS (Stormwater Multiple Application and Report Tracking System) website. At the top, there is a navigation bar with the California Water Boards logo and several menu items: Board, Programs, Drinking Water, Water Quality, Water Rights, Notices, Water Boards, and Search. Below the navigation bar is a large banner for SMARTS with the text "Stormwater Multiple Application and Report Tracking System" and the SMARTS logo. To the right of the banner is a "SMARTS LOGIN" section with fields for "User ID:" and "Password:", and buttons for "Login" and "Create Account". Below the login section is a "Browser Requirements" notice: "SMARTS works best with Microsoft Edge. The use of other browsers may cause unexpected errors." At the bottom of the page, there are four icons: "Public User Menu" (highlighted with a yellow box), "Permit FAQs", "SMARTS Resources", and "Email SMARTS Help".

SMARTS – PUBLIC SEARCH

Water Boards Stormwater Multiple Application & Report Tracking System

Notice Of Intents Search Results

Following are the results that matched with your search criteria. To refine or start a new search, click [Back](#) button on the browser.

[Export to Excel](#) [Back to Search](#)

1 (1 of 1) Display 20 per page

| App ID | WDID | Application Type | Status | Status Date | Owner/Operator Name & Address | Site/Facility Name & Address | NOI Form | Attachments | Receipt Letter |
|--------|---------------|------------------|--------|-------------|---|---|--------------------------|----------------------------------|--------------------------------|
| 482339 | 2 01NEC002913 | Industrial | Active | 01/18/2017 | AHG GROUP LLC 1968 Alpine Way Hayward California 94545 | AHG GROUP LLC 1968 Alpine Way Hayward California 94545 | NOI Form | View Attachments | Receipt Letter |

1 (1 of 1) Display 20 per page

NOT List

(1 of 1) Display 20 per page

| NOT ID | WDID | NOI Type | Waiver | Linear | Status of Document | Status Date | Site/Facility Name & Address | Basis of Termination |
|-------------------|------|----------|--------|--------|--------------------|-------------|------------------------------|----------------------|
| No records found. | | | | | | | | |

(1 of 1) Display 20 per page

NOTICE OF INTENT

- Stormwater Pollution Prevention Plan
- Best Management Practices
- Monitoring and reporting requirements
- Exceedance Response Actions



NO EXPOSURE CERTIFICATION



- For facilities whose industrial materials or activities are not exposed to stormwater
- No Exposure Certification Checklist: all materials and activities must be protected by a storm-resistant shelter at all times
- No Stormwater Pollution Prevention Plan or monitoring required
- Requires annual inspection and recertification



REGIONAL WATER BOARD PRIORITIZATION

IGP PRIORITIZATION

- Inspection target: 10% of active NOI facilities
 - IGP NOI
 - IGP NEC
 - IGP Non-filers

| | TOTAL | FY 24/25 INSPECTION TARGET |
|-----|-------|----------------------------------|
| NOI | 1117 | 72 |
| NEC | 1180 | 48 |

IGP PRIORITIZATION

FACTORS
CONSIDERED



INDUSTRIAL
SECTOR



ENVIRONMENTAL
JUSTICE



MONITORING
RESULTS



MISSING REPORTS



PAST
INSPECTIONS/
REFERRALS

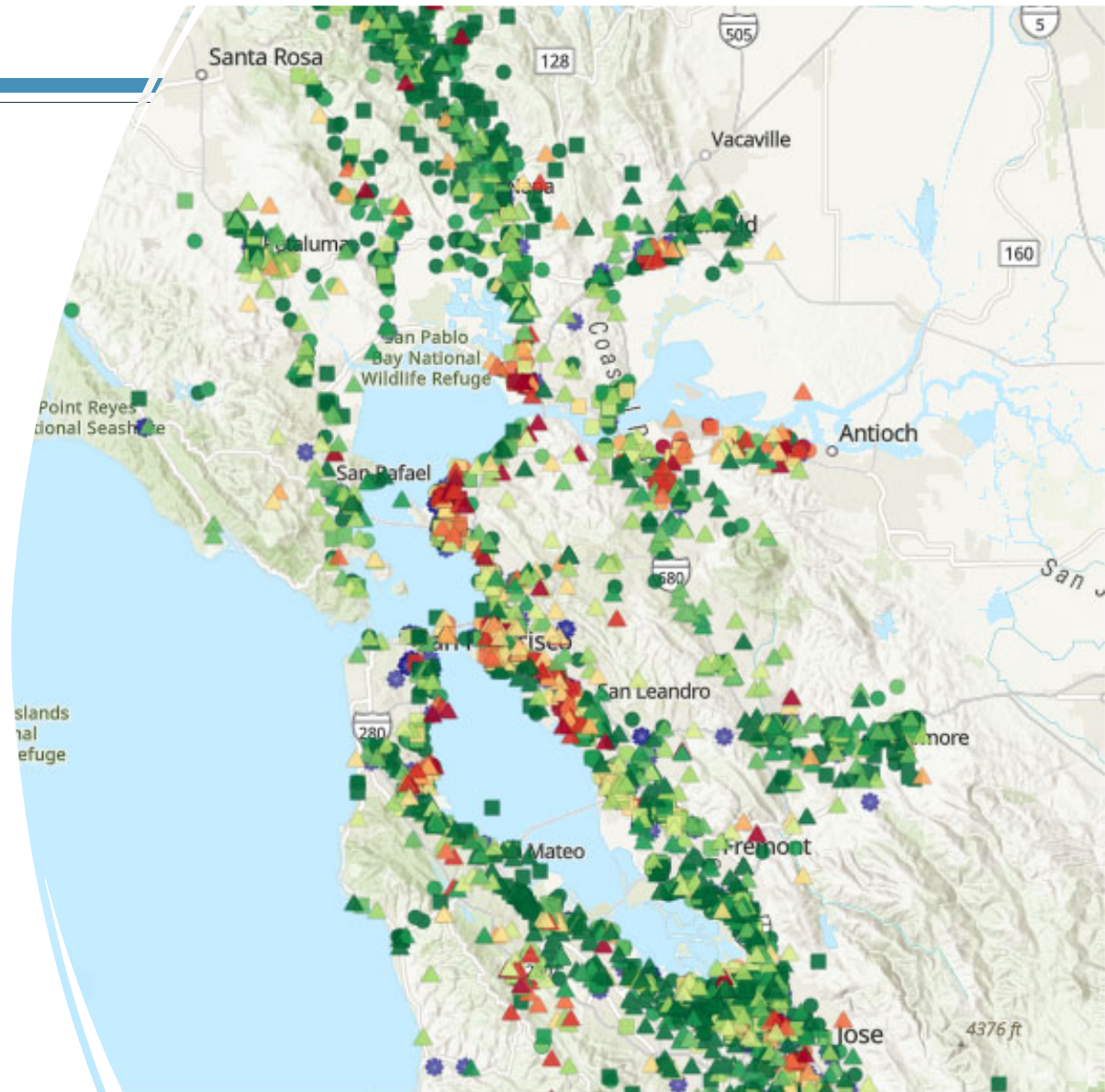


YEARS ACTIVE

IGP PRIORITIZATION

ArcGIS Map – Layers:

- IGP NOI
- IGP NEC
- IGP Non-filers
- CGP





INSPECTION FOCUS ITEMS

STORMWATER POLLUTION PREVENTION PLAN (SWPPP)

1. Facility name and contact information
2. Site map
3. List of industrial materials
4. Description of potential pollution sources
5. Assessment of potential pollutant sources
6. Minimum Best Management Practices
7. Advanced Best Management Practices, if applicable
8. Monitoring Implementation Plan
9. Annual Evaluation
10. Date prepared and date of each amendment

BEST MANAGEMENT PRACTICES



GOOD
HOUSEKEEPING



PREVENTATIVE
MAINTENANCE



SPILL AND LEAK
PREVENTION
AND RESPONSE



MATERIAL
HANDLING
AND WASTE
MANAGEMENT



EROSION AND
SEDIMENT
CONTROLS



EMPLOYEE
TRAINING
PROGRAM

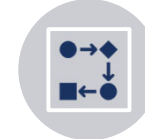


QUALITY
ASSURANCE AND
RECORD KEEPING

Minimum BMPs



EXPOSURE
MINIMIZATION



STORMWATER
TREATMENT
SYSTEMS



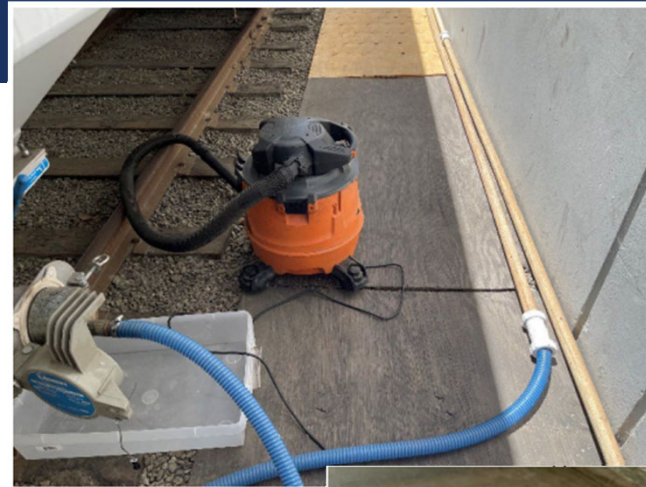
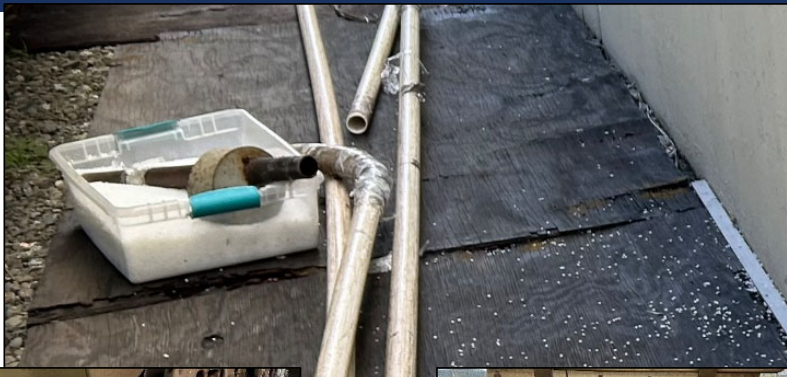
CONTAINMENT AND
DISCHARGE
REDUCTION

Advanced BMPs

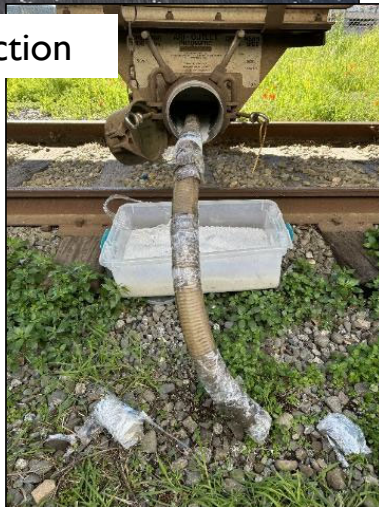


INSPECTION CASE EXAMPLES

METROPOLY, SAN LEANDRO



During Inspection



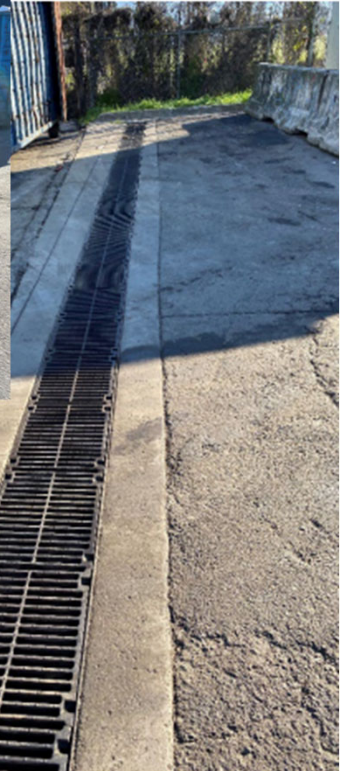
Corrective Actions



BERKELEY TRANSFER STATION, BERKELEY



During Inspection



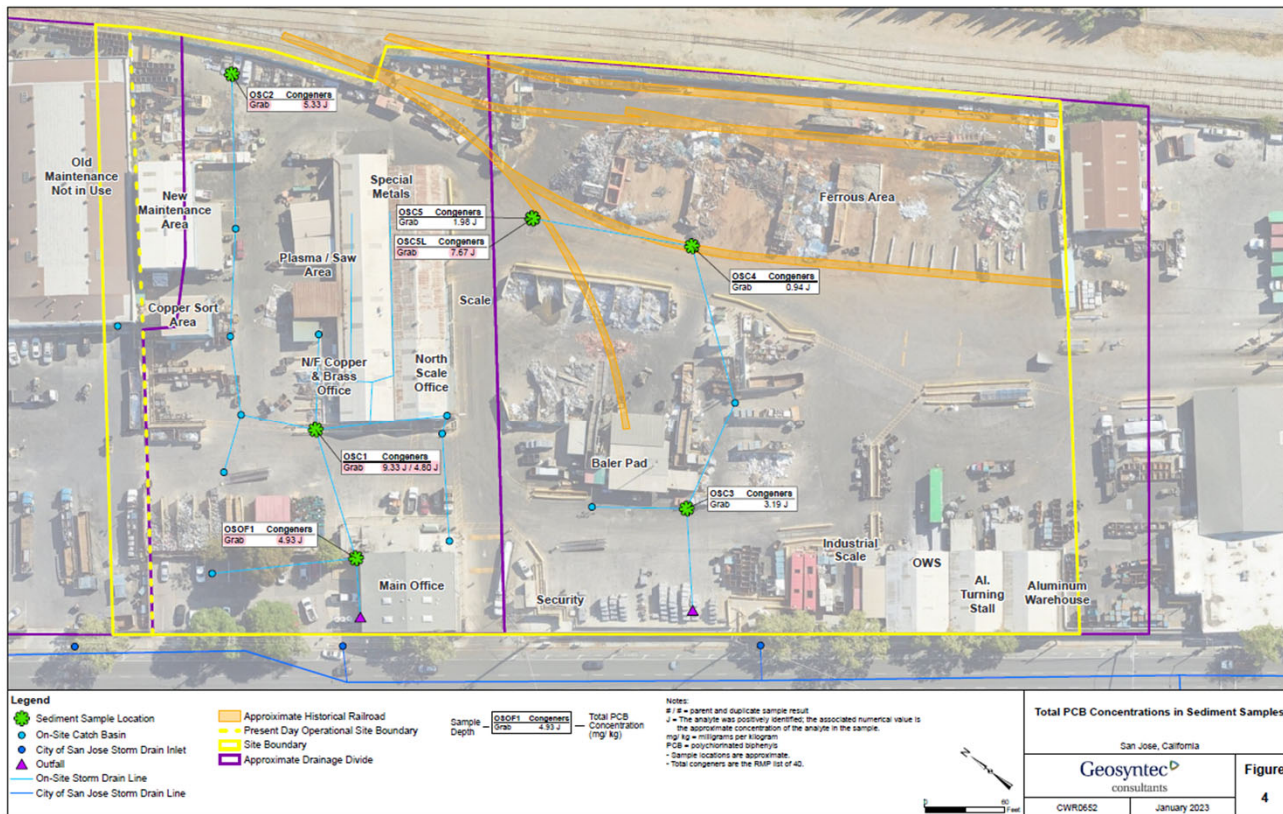
Corrective
Actions



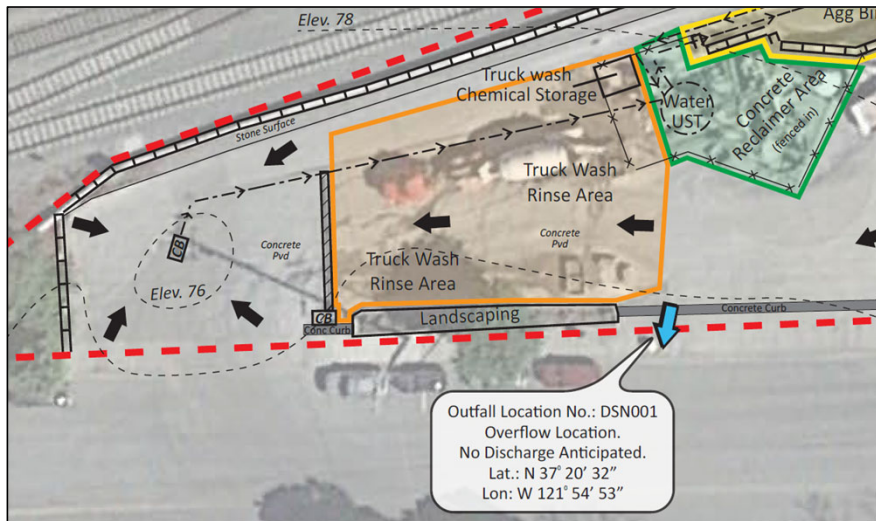
AHG LLC, HAYWARD



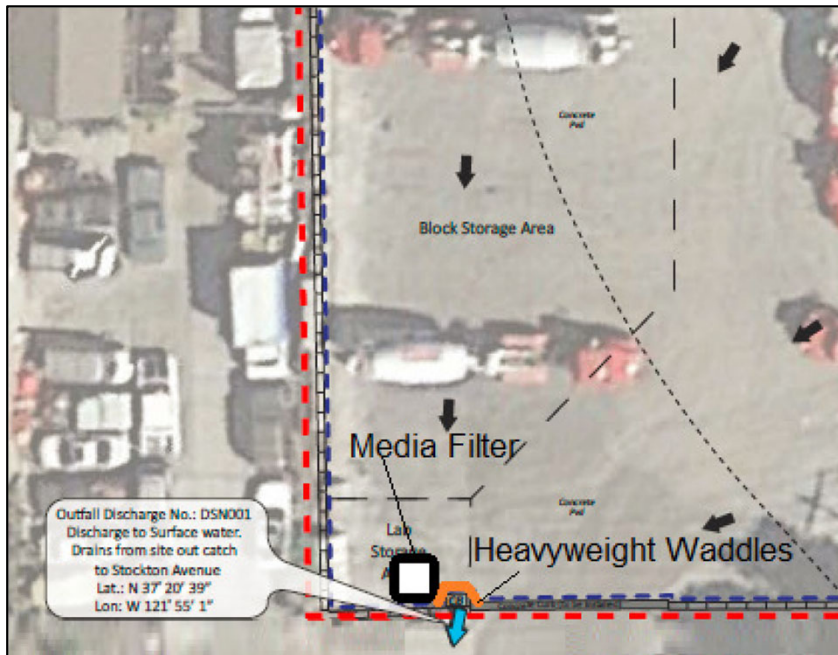
SIMS SAN JOSE



CONCRETE READY-MIX, SAN JOSE



CONCRETE BLOCK MANUFACTURING AND RECYCLING, SAN JOSE



COORDINATION

- Municipal inspectors play important role in ensuring industrial facilities comply with stormwater requirements
- Contact us to coordinate on facility reviews or inspection, or to refer facilities/sites to us for follow-up:
 - Region 2 Stormwater Mailbox: r2stormwater@waterboards.ca.gov
 - Maggie Monahan: margaret.monahan@waterboards.ca.gov
 - Joseph Monical: joseph.monical@waterboards.ca.gov



SUMMARY

- The Industrial Stormwater General Permit applies to a range of industrial activities
- A facility self-certifies that they qualify for the permit coverage obtained
- Regional Water Board inspection target is 10% of facilities per year
- Prioritization is based on many factors – industry sector, environmental justice, compliance history
- Coordination and collaboration is key to ensure industrial facilities operate to control stormwater runoff

RESOURCES

- Industrial Stormwater General Permit:
https://www.waterboards.ca.gov/water_issues/programs/stormwater/igp_20140057dwq.html
- Program webpage:
https://www.waterboards.ca.gov/water_issues/programs/stormwater/industrial.html
- Senate Bill 205 webpage:
https://www.waterboards.ca.gov/water_issues/programs/stormwater/sb_205_business_license_requirements.html
- Stormwater Multiple Application and Report Tracking System:
<https://smarts.waterboards.ca.gov>
- SMARTS Help Guides:
https://www.waterboards.ca.gov/water_issues/programs/stormwater/smarts/industrial/indst_help_guides.html
- California Stormwater Quality Association (CASQA):
<https://www.casqa.org/>
- U.S. EPA Industrial Stormwater Fact Sheets:
<https://www.epa.gov/npdes/industrial-stormwater-fact-sheet-series>