



Schaaf & Wheeler

CONSULTING CIVIL ENGINEERS

QUALIFICATIONS FOR

Santa Clara Valley Urban Runoff Pollution Prevention Program

Design, Review and/or Certify Storm Water Treatment Measures and
Hydromodification Control Facilities

August 16, 2024

Schaaf & Wheeler

CONSULTING CIVIL ENGINEERS

4699 Old Ironsides Drive, Suite 350

Santa Clara, CA 95054

(408) 246-4848

August 16, 2024

Vishakha Atre
EOA, Inc.
SCVURPPP
1410 Jackson Street
Oakland, CA 94612

Subject: Qualifications for Design, Review and/or Certify Storm Water Treatment Measures and Hydromodification Control Facilities

Dear Ms. Atre:

Schaaf & Wheeler is pleased to submit the enclosed qualifications to the Santa Clara Valley Urban Runoff Pollution Prevention Program (SCVURPPP). Schaaf & Wheeler has been engaged in water resources engineering since 1985 and has worked on virtually every water course in the Santa Clara Valley.

Our engineers understand the issues associated with urban runoff and the effects pollutants can have on water quality and the environmental health of local streams as well as San Francisco Bay. We have routinely designed water quality enhancement elements in new projects, have led the way in the use of the HMP methodology, and have been actively reviewing and checking work completed by other firms and agencies for co-permittees in SCVURPPP.

Recognized by SCVURPPP as a qualified consultant to design and review proposed stormwater treatment control Best Management Practices (BMPs) and hydromodification flow control facilities for new and redevelopment projects, Schaaf & Wheeler engineers have conducted over 600 stormwater control plan reviews connected with development projects since 2011. Schaaf & Wheeler is also recognized as a qualified consultant to certify the construction of BMPs and has completed over 130 certifications since 2013.

Schaaf & Wheeler works with developers to ensure the most effective stormwater treatment measures are designed and that all calculations meet the NPDES municipal stormwater requirements. We understand that more complex the project is, the more likely it is to require significant revisions by Schaaf & Wheeler engineers.

We have assembled a team of qualified and technically trained engineers who will serve as the core team and points of contact. Robin J. Lee, PE will serve as the project manager. She has more than 20 years of experience providing similar services throughout the Bay Area.

I will provide peer review and quality control. I have more than 15 years of experience overseeing stormwater inspection and design projects in California. Our team constantly enhances their skills by continuous training and attendance at educative workshops, webinars, and conferences conducted by agencies like C/CAG, CASQA, EPA, SMCWPPP, SCVURPPP, STORMS, and Coastal Conservancy, to name a few.

Our past experience with the best management practices, design of LID measures, hydromodification management planning and continued hydrologic modeling for development projects will help us develop comprehensive and executable models, methodologies, and standards. We believe in working alongside the Co-Permittee Agency staff in making decisions and are additionally available to provide workshops and training.

My team and I are available and look forward to extending our services to SCVURPPP. Should you need any further information, please contact me at (415) 823-4964 or ctharp@swsv.com.

Sincerely,
Schaaf & Wheeler



Caitlin J. Tharp (Gilmore), PE, CPSWQ
Vice President

Table of Contents

Business Information	1
Team Personnel	5
Core Team Experience	6
Core Team Qualifications	7
List of Trainings Completed by Core Team Members	8
Project Understanding	9
Relevant Projects and References	10
Interest, Availability, and Commitment.....	11
Appendix A: Resumes	
Appendix B: Proof of Training	
Caitlin J. Tharp (Gilmore), PE, QSD, QSP	
Robin J. Lee, PE	
Andrea Castro, EIT	
Nasser Danishyar, EIT	

Business Information

Firm Name:	Schaaf & Wheeler
Type of Organization:	Corporation – Incorporated in California since 1985, in business 39 years
Primary Contact:	Robin J. Lee, PE (415) 271-3117; rlee@swsv.com
Offices:	HQ: 4699 Old Ironsides Drive, Ste. 350, Santa Clara, CA 95054 870 Market Street, Ste. 1278, San Francisco, CA 94102 2200 Range Avenue, Ste. 201, Santa Rosa, CA 95403 3 Quail Run Circle, Ste. 101, Salinas, CA 93907 10232 Donner Pass Road, Ste. 4, Truckee, CA 96161 250 Bel Marin Keys Boulevard, Bldg. A, Ste. 205, Novato, CA 94949
Size:	42 employees, including 16 fully licensed engineers
Professional Registrations and Affiliations:	Certified State of California Small Business Enterprise Certification No. 40527

Schaaf & Wheeler is a civil engineering firm focused in water resources. With almost 40 years of commitment to solving flood control, stormwater, wastewater, potable water, and recycled water problems, Schaaf & Wheeler is recognized by public and private sector clients for its value-added engineering. We are certified as a small business enterprise by the State of California and operate from six locations: Santa Clara, San Francisco, Santa Rosa, Salinas, Truckee, and Novato. Schaaf & Wheeler has 10 areas of focus within the water resources discipline:

- Hydrology and hydraulics analyses, including site evaluations and modeling;
- Flood control analyses, including floodplain studies and channel design, filing of letters of map revision, and FEMA coordination;
- Watershed assessments, erosion and sediment control, and bioengineered channel stabilization;
- Water quality, including design or review of best management practices (BMPs) for stormwater treatment and hydromodification flow control facilities;
- Stormwater management and drainage services, including master planning, engineering, and design of urban storm drain systems and pump stations;
- Wastewater system master planning, engineering, and design of conveyance systems, including lift stations;
- Potable water system master planning, modeling, engineering; and design of supply, storage, collection and distribution systems, including tanks and booster stations;
- Recycled water systems planning, engineering, and design; including reclamation feasibility studies and customer retrofits;
- Construction management, construction site observation, construction inspection services, value engineering, construction cost analysis, and constructability reviews; and
- Project management, including management of subconsultants, containment of schedule and cost, and communications with client and stakeholders.

Intent and Continuity

Schaaf & Wheeler submits these qualifications to SCVURPPP with the intention of being included on the list of licensed engineers who are qualified to design or review proposed stormwater treatment control best management practices (BMPs) and hydromodification flow control facilities for new and redevelopment projects, as well as certify BMP construction.

Schaaf and Wheeler has been on SCVURPPP's Qualified Consultant List since 2011 and have provided services to local agencies and developers on several projects. SWMP reviews and inspections completed in Santa Clara County from the last three years are listed below:

Project	City	Client
22690 Stevens Creek SWMP - Building	Cupertino	Ali Mozaffari - Alan Enterprise, LLC
20860 McClellan Road- building	Cupertino	MH Engineering Co.
Hamptons Parking Preliminary	Cupertino	CEA
Hamptons Parking FINAL	Cupertino	CEA
Mirage SWMP	Cupertino	Kier & Wright
Sunny View	Cupertino	Kier & Wright
95 Farrell Ave	Gilroy	Michael Kuang
700 W. 6th Street Final/Building	Gilroy	CBG Engineers - Evan Dambacher
Las Animas - Preliminary	Gilroy	Endeavor Storage
10th and Chestnut SWMP	Gilroy	MacKay & Soms Civil Engineers
Ren Fu Villa - Miller Avenue SWCP	Gilroy	Susan Wang
330 Distel Circle	Los Altos	Ryan Barker
374 Second Street	Los Altos	BKF
Charleston Plaza	Mountain View	Charleston Mountain View Owner
1100 La Aveninda	Mountain View	Eden Housing
600 Ellis Street - Final	Mountain View	Kier & Wright
1600 Amphitheatre	Mountain View	Novo Construction
570 South Rengstorff	Mountain View	Taylor Morrison
Google 1555 Plymouth SWMP - Final	Mountain View	WRNS Studio
739 Sutter Ave	Palo Alto	739 Sutter Associates, LLC
901 S California Ave - Preliminary	Palo Alto	BKF Engineers
3181 Porter Dr - Preliminary	Palo Alto	BKF
1036 East Meadow Circle Building	Palo Alto	Google
4256 El Camino Real - Final	Palo Alto	HXH Property LLC
3606 El Camino Real Prelim SWMP	Palo Alto	Kier & Wright
3781 El Camino Real Prelim SWMP	Palo Alto	Kier & Wright
Stanford Shopping Bldg EE - entitlement	Palo Alto	Kimley Horn
Stanford Shopping Center Building EE	Palo Alto	Kimley Horn
Castilleja School SWMP	Palo Alto	Sandis
Blake Wilbur Drive Extension SWMP	Palo Alto	Stanford Health Care
788 San Antonio - Final	Palo Alto	Studio S Squared Architecture
3335 Kifer Road (Kifer Senior Housing)	Santa Clara	Abode Services, Allied Housing
Tasman Parcel 11 SWMP	Santa Clara	Tasman East Parcel 56 Owner
Gateway Crossing Park	Santa Clara	BKF
2200 Calle de Mundo - Final	Santa Clara	BKF

Project	City	Client
The Meridian SWMP (3941 Stevens Creek)	Santa Clara	BKF Engineers
Mainline North (2310 Calle Del Mundo) - Final	Santa Clara	BKF Engineers
Tasman East - Final	Santa Clara	CBG Engineers
Coresite SV5	Santa Clara	CoreSite - Chris Pruitt
Coresite SV7	Santa Clara	CoreSite - Chris Pruitt
Tasman East - Parkside - Final	Santa Clara	
3575 De La Cruz Prelim	Santa Clara	Habitat for Humanity
3575 De La Cruz Prelim Re-Review	Santa Clara	Habitat for Humanity
2900 Semiconductor Dr - Preliminary	Santa Clara	Kier & Wright
(Tasman East) 2300 Calle De Luna - Final	Santa Clara	Related California
Lincoln of Stevens Creek SWMP	Santa Clara	Sandis
2655 The Alameda Preliminary	Santa Clara	Sandis
2655 The Alameda Preliminary Re-Review	Santa Clara	Sandis
3000 Patrick Henry Dr - Preliminary	Santa Clara	Summerhill Apartments Communities
2175 Martin - Building Review	Santa Clara	Prime Data Center
Quito Village - Building	Saratoga	Civil Engineering Associates, Inc.
Palm Villas	Saratoga	Sandis
490 Mathilda SWMP	Sunnyvale	BKF
Cityline Block 3 North SWMP	Sunnyvale	BKF
899 Kifer Road SWMP - Fortinet/169 Commercial St	Sunnyvale	BKF
Cityline Block 3 South SWMP	Sunnyvale	BKF
Corn Palace Park	Sunnyvale	Callander Associates
Toyota Sunnyvale SWMP	Sunnyvale	Civil Engineering Associates, Inc.
MPGL 2A2 Bridge	Sunnyvale	Devcon
950 Kifer Rd - Final	Sunnyvale	Kier & Wright
1139 Karlstad Drive	Sunnyvale	Pulte Homes
Cityline Building B	Sunnyvale	STC Venture Block B, LLC

In addition, a list of projects in Santa Clara County that we have completed construction certification for in the last three years is included below:

Project	City	Client
3215 Porter Drive SWMP	Palo Alto	Stanford Real Estate
695 Arastadero SWMP Inspection	Palo Alto	Tico Construction Company, Inc.
1501 Page Mill SWMP	Palo Alto	BKF
1250 Page Mill Road SWMP Inspection	Palo Alto	Kodiak Sciences Inc.
Webster Hamilton SWMP	Palo Alto	BKF
Wilton Court	Palo Alto	Alta Housing
Blake/Wilbur Extension	Palo Alto	Stanford Health
Lawson Lane - Phase 2	Santa Clara	Kier & Wright
Moonlite Lanes	Santa Clara	KB Home
Costco Mini Roundabout SWMP final	Santa Clara	K&W
Vantage CA22 and 23 5&14	Santa Clara	HMH
Viso - 575 Benton St	Santa Clara	Prometheus Real Estate Group

Team Personnel

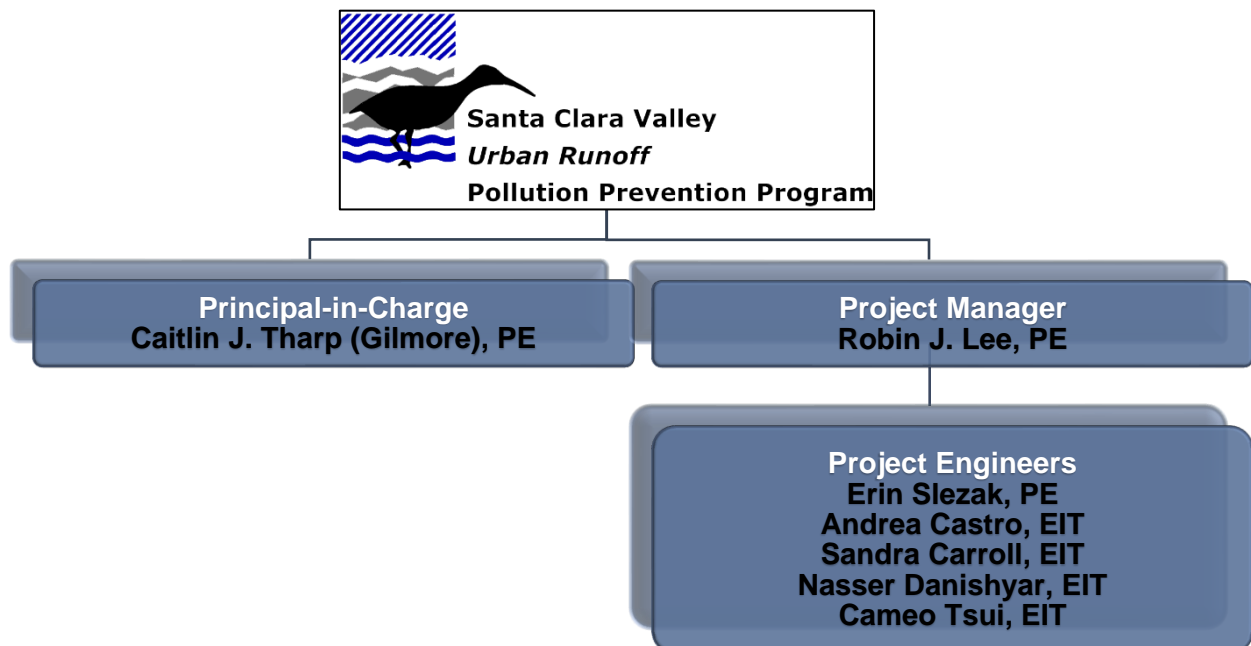
Schaaf & Wheeler proposes a seven-person design and review team of engineers who will work on SCVURPPP and SCVURPPP co-permittee agency storm water treatment control BMPs and hydromodification flow control facilities for new and development projects.

The team will be led by Robin J. Lee, PE. Robin has more than 20 years of experience and is accomplished in third-party SWMP inspections and reviews, NPDES permit compliance, and storm sewer system design. She has provided numerous third-party reviews of stormwater management and pollution prevention plans. Robin will guide the work of the other team members on projects as they arise.

Robin will be responsible for day-to-day project management for the entire length of each project. She will focus and maintain the project schedule and budget as well as undertake ultimate responsibility for the quality of all work products. Robin will hold regular team meetings to make sure issues are resolved effectively and to allocate resources to critical tasks. She will work closely with the Co-Permittee Agency staff to make sure contractual and procedural issues are exposed and resolved.

Caitlin J. Tharp (Gilmore), PE, CPSWQ, QSD/QSP will serve as principal-in-charge and provide quality assurance oversight of team members' work. Caitlin is certified by the state of California as Qualified Stormwater Pollution Prevention Plan (SWPPP) Developers and Practitioners (QSD and QSP) and brings in more than 15 years of experience in stormwater systems, hydrology and hydraulics, open channel design, riverine scour analysis and trash capture siting and design.

The organization chart below depicts each team member's role, followed by tables showing key personnel qualifications, licenses, trainings, and experience. Full resumes presenting detailed project experience of each proposed team member are included in Appendix A. Proof of training is included in Appendix B.



Core Team Experience

Experience	Robin J. Lee, PE	Caitlin J. Tharp (Gilmore), PE, QSD, QSP	Erin Slezak, PE	Andrea Castro, EIT	Cameo Tsui, EIT	Sandra Carroll, EIT	Nasser Danishyar, EIT
Stormwater Control Plan Review	✓	✓	✓	✓	✓	✓	✓
Stormwater Treatment Measure Installation Certification	✓	✓	✓		✓	✓	✓
NPDES Regulatory Requirements	✓	✓	✓	✓	✓	✓	✓
Municipal Stormwater Program Development	✓						
LID Workshop Presentations	✓	✓					
On-Call Services Management	✓	✓					
Drainage and Site Plan Design & Review	✓	✓	✓	✓	✓	✓	
HMP Design and Modeling	✓	✓	✓	✓			
Report Writing	✓	✓	✓	✓	✓	✓	

Core Team Qualifications

Name	License and Education	Role	Years of Experience
Robin J. Lee, PE	Registered Civil Engineer California C70040 Washington 43587	Project Manager	20
Caitlin J. Tharp (Gilmore), PE, QSD	Registered Civil Engineer California C76810 Qualified SWPPP Developer (QSD) and Qualified SWPPP Practitioner (QSP) 22060 Certified Professional in Stormwater Quality (CPSWQ)	Principal-in-Charge	15
Erin D. Slezak, PE	MS, Civil Engineering – Water Resources, San Jose State University BS, Environmental Engineering, South Dakota School of Mines and Technology Registered Civil Engineer, California C90034	Project Engineer	12
Andrea Castro, EIT	MS, Civil and Environmental Engineering, Environmental Processes, Cornell University BS, Environmental Resources Engineering, Humboldt State University Engineer-in-Training, California, 129496	Project Engineer	11
Cameo Tsui, EIT	Master of Science in Civil and Environmental Engineering, Stanford University Bachelor of Science in Biological Systems Engineering, UC Davis Engineer-in-Training, California, 166196	Project Engineer	4
Sandra Carroll, EIT	BSCE, University of California, Davis Engineer-in-Training, California, 173398	Project Engineer	3
Nasser Danishyar, EIT	MS, Civil Engineering, Structure, Isfahan University of Technology BS, Civil Engineering, Herat University Engineer-in-Training	Project Engineer	2

List of Trainings Completed by Core Team Members

Event	Team Member(s)	Date
SCVURPPP Annual C.3 Stormwater Workshop	Robin J. Lee, PE Sandra Carroll, EIT Cameo Tsui, EIT	6/4/2022
CASQA Quarterly Meeting	Caitlin J. Tharp, PE	7/14/2022
CASQA Conference 2022	Caitlin J. Tharp, PE Robin J. Lee, PE	10/26/2022
SMCWPPP Annual C3 Training	Robin J. Lee, PE Sandra Carroll, EIT	1/31/2023
CASQA Quarterly Meeting	Caitlin J. Tharp, PE	4/6/2023
CEPSYM California Extreme Precipitation Symposium	Caitlin J. Tharp, PE	6/27/2023
CASQA Quarterly Meeting	Caitlin J. Tharp, PE	7/13/2023
CASQA Conference 2023	Caitlin J. Tharp, PE	10/1/2023
BAHM Training	Robin J. Lee, PE Andrea Castro, EIT	10/24/2023
QSD/QSP Renewal	Caitlin J. Tharp, PE	12/1/2023
SMCWPPP C3 Training	Robin J. Lee, PE Andrea Castro, EIT Nasser Danishyar, EIT	6/18/2024
CASQA Seminar Series	Caitlin J. Tharp, PE	4/25/2024
CEPSYM California Extreme Precipitation Symposium	Caitlin J. Tharp, PE Robin J. Lee, PE	7/11/2024

Project Understanding

Urban Storm Water Management: Practices, Issues, and Requirements Including LID Requirements

Stormwater management is employed in an urban environment in order to ameliorate the effects that typical urban projects induce on ambient water quality. Runoff from urban areas can be, in some instances, more polluted than raw sewage as was proven more than 20 years ago using San José runoff as one of the test cases. Today's provisions for primary-level treatment go a significant way toward cleaning up the riparian environment in urban and urbanizing areas. The goals are laudable, the methods are doable, and the results are encouraging.

The Regional Water Quality Control Board has implemented regulations that place a significant emphasis on the use of Low Impact Development (LID) design. The use of LID design helps the watershed to behave similar to an undeveloped watershed which aids in the health of waterways from both a quality and quantity standpoint. As the regulatory field changes, it is important to maintain current understanding of LID measures such as infiltration, capture and bioretention. Field verification helps ensure that these best management practice designs will function as intended.

Many projects are high density urban infill within Santa Clara County. This requires special consideration to balance site requirements for density, existing topography, ADA access and construction within the floodplain with LID treatment. This can include consideration for more than just bioretention, including self-retaining and self-treating areas, tree credits, rainwater harvesting, pervious pavement and green roofs.

Continuous Simulation Hydrologic Models and Analysis of Output Data

The continuous simulation program, using the HEC program, the HSPF program, or the Bay Area Hydrology Model (BAHM), uses recorded rainfall transposed to a site and attempts to simulate some important aspects of the hydrologic cycle in the rainfall, loss, infiltration, runoff, interflow, groundwater flow, groundwater recharge, and evapotranspiration aspects of that cycle.

The continuous simulation tool is just that: a tool. Used properly to support the water quality improvement goals of reducing erosion and sedimentation issues in creeks and streams, the continuous simulation model can be a valuable engineering tool in the development of appropriate mitigation measures. These programs, like any other simulation programs, must be used with judgment and care so that solutions can be created where they will indeed help protect our water resource quality.

This judgment and care include the selection of appropriate vault or pond configurations as well as outlet structures and the correct modeling of them within BAHM. Recent updates to the BAHM model include green infrastructure elements. Schaaf & Wheeler has attending trainings by Clear Creek Solutions, Inc. to maintain our understanding of the model elements and applicability as well as the latest BAHM2023 release.

On-Site Third-Party Inspections of Installed Stormwater Treatment

A construction plan is only as good as the contractor's ability to execute it. By having a qualified professional in stormwater treatment design attend the construction of the stormwater treatment devices it greatly increases the chances for successful and effective long-term treatment. Many common errors are easily rectified during construction before project completion and costly re-constructions and delays.

Relevant Projects and References

Client Contact:

Valerie Tam,
Assistant Engineer
City of Palo Alto
Phone: (650) 329-2397
Email: valerie.tam@cityofpaloalto.org

Location: City of Palo Alto

Date: Various

Key Personnel: Robin J Lee, PE;
Caitlin J. Tharp (Gilmore), PE,
QSD/QSP, CPSWQ

Stormwater Treatment Facilities Installation Inspections

The City of Palo Alto requires that all new development and redevelopment sites have a third-party inspection for C.3 compliance during construction prior to building occupancy. Schaaf & Wheeler has been performing these inspections and have developed inspection checklists to ensure that treatment control measures (e.g. bioretention areas, infiltration planters, etc.) comply with the standards set in the SCVURPPP manual and the requirements of the Municipal Regional Permit. Schaaf & Wheeler is adept at trouble shooting construction site complications and ensuring issues are identified early before modifications become costly.

Client Contact:

Nektarios Matheou, PE
Kier & Wright Engineers
Phone: (408) 727-6665
Email: nmatheou@kierwright.com

Location: Santa Clara County

Date: Various

Key Personnel: Robin J. Lee, PE;
Caitlin J. Tharp (Gilmore), PE, QSD,
QSP, CPSWQ

Stormwater Control Plan Third Party Review

Schaaf & Wheeler has been performing third-party reviews as a SCVURPPP approved firm since 2011 and has developed checklists and spreadsheets to ensure the requirements are met and treatment measure sizing calculations are correct. Schaaf & Wheeler works with developers by sending comments for required updates and necessary changes to be made so that each stormwater control plan complies with the standards set in the SCVURPPP manual and the requirements of the Municipal Regional Permit prior to submittal to the municipality. We perform these reviews for both planning application submittals as well as for building permit applications.

Client Contact:

Phong Kiet
Project Manager, BKF
Phone: (408) 467-9173
Email: pkiet@bkf.com

Location: City of San Jose

Date: 2011 – Present

Key Personnel: Caitlin J. Tharp
(Gilmore), PE, QSD, QSP, CPSWQ;
Erin Slezak, PE; Robin Lee, PE

3rd Party Entitlement, Building Permit and Inspections of Stormwater Treatment Devices

Schaaf & Wheeler has been assisting BKF Engineers to review drainage plans and water quality control plans for various developments within Santa Clara County. We have worked with the project engineers, project owners, and cities to ensure compliance with the SCVURPPP manual and the updated 2022 Municipal Regional Permit.

Interest, Availability, and Commitment

Schaaf & Wheeler is interested in continuing to work with SCVURPPP to assist the organization with its admirable goal of improving the quality of our water resources and protecting natural streams. Understanding that SCVURPPP's qualified firm list will be made available to co-permitting agencies, Schaaf & Wheeler team is fully prepared and available to provide design, review, or inspection services when an agency project comes our way.

Schaaf & Wheeler has been providing these services for 13 years and looks forward to continuing to do so. We take pride in being contributors towards playing an active role in improving our local infrastructure, aiding in the health of our creeks, and helping to keep our environment green and healthy.

Our team of professionally trained and qualified engineers allows Schaaf & Wheeler the flexibility to effectively mobilize short-term review projects without jeopardizing long-term design projects, thereby providing timely and professional service for both.

Appendix A: Resumes

Robin J. Lee, PE

Senior Project Manager



Robin J. Lee, PE has 20 years of experience in water resource engineering from planning all the way through detailed design. Robin has worked on single event modeling related to flooding issues to holistic design event modeling related to master planning. Robin's experience includes modeling and design of storm water and sewer systems, drainage systems, hydrology and hydraulics, water quality, and FEMA applications. Robin is accomplished at analyzing statistical storm events and calibrating hydrologic models for a variety of projects.

Robin is well versed in stormwater regulations from NPDES to local regulations. She has worked primarily on stormwater treatment, trash capture, and green infrastructure requirements by writing feasibility studies and designing trash capture systems. Robin recently completed a feasibility for Mendocino County to meet the Phase II trash capture requirements. Robin also provides Third Party Reviews for Stormwater Management Plans for development projects throughout the Bay Area to assist City staff to ensure that the development meets the requirements of the San Francisco Bay Municipal Regional Permit.

Selected Project Experience

Development Review and Management

Third Party C3 SWMP
Reviews and Inspections
Various Clients

On-call Development Review
and Construction Review
Foster City

Foster City Water, Sewer,
and Storm Drain Standard
Detail Updates
City of Foster City

Water Quality/Environmental

Physical Stream Channel
Assessment
County of Puyallup

Mount Vernon NPDES Phase
II Stormwater Program

Development and
Implementation
City of Mount Vernon

Lake Whatcom Tributary
Monitoring
Whatcom County

Greater Los Angeles County
Integrated Regional Water
Management Plan
Los Angeles County

Green Infrastructure

Hillcrest Park Regional Green
Infrastructure and Trash
Capture
City of Concord

Green Infrastructure Plan
City of South San Francisco

Green Infrastructure Plan
City of San Bruno

Education

MS, Civil and Environmental
Engineering, UC Berkeley

BS, Civil and Environmental
Engineering, UC Los
Angeles

Licenses

Registered Civil Engineer
California C70040

Washington C43587

Affiliations

American Society of Civil
Engineers (ASCE)

Toastmasters International
World Water Corps
Volunteer, Bolivia

Software

HEC-HMS, GeoHECRAS,
EPANET, HEC-RAS,
SWMM, InfoSWMM, GIS,
ArcPro, HY-8, BAHM

Low Impact Development
Design and Drainage Report
for Sebastapol Multi Lot
Development
Atlas Civil Design

Trash Capture

Caltrans Large Scale Trash
Capture Feasibility
City of Sunnyvale

Large Full Trash Capture
Device Feasibility Project
Marin County Flood Control
and Water Conservation
District

Large Scale Trash Capture
Feasibility for Caltrans
Funding
County of San Mateo

Trash Capture Feasibility
Study and Design
Mendocino County

100% Trash Capture Plan
City of San Bruno

100% Trash Capture Plan
City of South San Francisco

NPDES Trash Capture
Feasibility Study
City of San Bruno

NPDES Trash Capture
Feasibility Study
City of South San Francisco

Small Trash Capture Device
Installation Design and
Management
City of South San Francisco

Small Trash Capture Device
Installation Design and
Management
City of San Bruno

Hydrology and Hydraulics

Comprehensive Stormwater
Plan
Marin City

Storm Drain Master Plan
Town of Corte Madera

Storm Drain Master Plan
Town of Ross

Zone 5 Storm Drain Master
Plan and Financial Study
Santa Cruz County

Citywide Flood Control and
Stormdrainage Master Plan
City of Mill Valley

Santa Clara Storm Drain
Master Plan
City of Santa Clara

Hydrologic & Hydraulic Model
for Zone 7 Watershed
Zone 7 Water Agency

Moraga Storm Drain Master
Plan
Town of Moraga

Storm Drain Maintenance
and Rehabilitation Plan
City of Ukiah

Great Oaks iStar
Development HMP and LID
Sizing

Ruth and Going, Inc

Communications Hill
Development Detention and
Stormwater Treatment
Analyses
HMH Engineers

Floodplain Management/Sea Level Rise

Zone D Flood Memos
Various School Districts

Zone A Flood Studies and
FEMA Applications
Various Clients

Singleton Road Bridge
Impact Analysis
Valley Water

Site Development Flood Plain
Study and FEMA
Applications
Various Clients

West Little Llagas Creek
LOMR
Morgan Hill

South Flea Market Floodplain
Analysis and LOMR
City of San Jose

Summerhill Homes Adrian
Court Flood Analysis and
FEMA Applications
Burlingame

Foster City Levee
Improvements
City of Foster City

SFO Shoreline Protection
Study
Moffet & Nichol

San Bruno/Colma Creek
Resiliency Study
Coastal Conservancy and
SFO

Foster City Lagoon Re-
Evaaluation of Base Flood
Elevation

City of Foster City

San Mateo Creek Capacity
Evaluation
City of San Mateo

Wastewater Systems

Five Year Capital
Improvement Plan
City of Mill Valley

CCTV and Design Services
for Sewer Improvements
City of Mill Valley

Combined Sewer Overflow
Long Term Control Plan
Modeling
Seattle Public Utilities

Lake Mead Tracer Study
Clean Water Coalition

Caitlin J. Tharp, PE

Vice President



Caitlin J. Tharp (Gilmore), PE has 15 years of experience with trash capture, water quality, water supply and distribution, hydrology and hydraulics, stormwater systems, open channel design, bridge scour analysis, and sea level rise design. Caitlin regularly prepares hydrology and water quality reports for EIRs as well as assess and design channels and waterfront development for climate change impacts. Caitlin is also accomplished in assessment and design of trash capture infrastructure, water quality BMP inspection and plan review, NPDES permit compliance, and storm system design.

She is currently assisting several northern California municipalities to comply with the Regional Municipal Permit Section C.10 and the State Trash Amendments to achieve their trash capture reduction goals. These projects include feasibility and design of trash capture devices. In the last 10 years, Caitlin has completed more than 50 FEMA LOMC applications to remove projects from the floodplain and is adept at floodproofing design and retrofit.

Selected Project Experience

Water Quality/Environmental

Calveras Boulevard
Expansion Drainage Impacts
and Location Hydraulics
Study
Milpitas

Heritage House CEQA
Hydrology and Flood Study
Napa County

Green Stormwater
Infrastructure Plan
City of Palo Alto

On-Call BART/VTA
Extension NPDES
Compliance and Storm
System Review
Milpitas

Butterfield Village Detention
and Stormwater Quality
Design
Morgan Hill

Stevenson and Mission
Developments BAHM
Modeling and HMP Design
Fremont

Library and El Camino Park
3rd Party Plan Review and
Construction Observation
City of Palo Alto

Serramonte Mall 3rd Party
C.3 Treatment Review and
Inspection
City of Daly City

NPDES Compliance Analysis
and Preliminary Design
North Gilroy Neighborhood
Districts

Coyote Highlands Hydrology
and Water Quality Study
San Martin

San Sebastian Hydrology
and Water Quality Study
Morgan Hill

Education

BSCE, Civil and
Environmental Engineering,
California Polytechnic
University, San Luis Obispo
MS, Environmental
Engineering, University of
Southern California

Licenses

Registered Civil Engineer,
California C76810
Nevada 030525

Certifications

LEED AP, QSD/QSP,
CPSWQ, CFM

Software

MikeUrban, AutoCAD,
ArcGIS, BAHM, HEC-RAS,
HEC-HMS

Cochrane-Borello Hydrology
and Water Quality
David J. Powers &
Assoc./City of Morgan Hill

Freeman Quarry Erosion
Control and Water Quality
Review
Gilroy

Trash Capture

Embarcadero Trash Capture
Design
City of Palo Alto

Trash Capture Feasibility
City of San Leandro

Trash Capture Feasibility
City of Union City

Willow Trash Capture Design

City of San Pablo	Trash Capture System Feasibility and Design at Piper Channel City of Oakley	Baylands No. 2 Stormwater Pump Station City of Sunnyvale
Tennyson & Arf Trash Capture Design City of Hayward	Trash Capture Design City of Mountain View	North San José Storm Drain Master Plan City of San José
Trash Capture Design at Poplar Golf Course City of San Mateo	Design of Trash Capture Device for Matadero Stormwater Pump Station City of Palo Alto	<u>Water Supply</u> San Jose General Plan Update UWMP Summary San Jose
MCSTOPPP Countywide Trash Capture Concepts Marin County	Design of Trash Capture Device for Coyote Stormwater Pump Station City of San Mateo	Stanford Next GUP Water Supply Assessment Leland Stanford Junior University
Phase 2 Trash Capture Feasibility Cities of Morgan Hill and Gilroy	Trash Capture Feasibility Study for 5 Pump Stations City of San Mateo	Moffett Gateway Water Supply Assessment Mountain View
Phase 2 Trash Capture Feasibility Mendocino County	NPDES Trash Capture Feasibility Study City of Mountain View	El Camino Hospital Water Supply Assessment Mountain View
Trash Capture Design City of Emeryville	NPDES Trash Capture Feasibility Study City of Livermore	Kahakuloa Acres Water Supply System Modeling and Storage Tank Design Maui
Phase 2 Trash Capture Feasibility Port of Oakland	Esplanade Trash Capture Device Cotton Shires & Associates/City of Pacifica	<u>Floodplain Analysis</u> Colorado Road Floodplain Analysis Atascadero
Phase 2 Trash Capture Feasibility Town of Windsor	<u>Stormwater Systems</u> Milpitas Watershed Master Plan Milpitas	Google Downtown West Los Gatos Creek Floodplain Analysis San Jose
Large and Small Scale Trash Capture Design City of Livermore	Planning and Design Google Downtown West Storm Drain Planning San Jose	West Little Llagas Creek LOMR Morgan Hill
Trash Capture Phase VI Preliminary Design and Design Support City of San Jose	Woz Way Coyote Creek Outfall Design San Jose	South Flea Market Floodplain Analysis and LOMR City of San Jose
Trash Capture Device Feasibility Study and Design City of San Bruno	Milpitas Storm Drainage Master Plan Milpitas	Floodproofing Feasibility, Design Review and Certification Menlo Park
Trash Capture Feasibility Study and Design for Athlone Pump Station County of San Mateo	Storm System Inventory and Prioritized Repair and Replacement Program Woodside	Lower Penitencia Creek Improvements Project Wood Rodgers/SCVWD
Trash Capture Feasibility Study City of Vallejo	Los Trancos Flood Remediation Los Trancos Water District, Portola Valley	Berryessa Penitencia Watershed Flood Study Wood Rodgers/SCVWD
Trash Capture Design at Dore Avenue City of San Mateo		
Trash Capture Feasibility Study and Preliminary Design City of South San Francisco		

Erin D. Slezak, PE

Associate Engineer



Erin D. Slezak, PE is an associate engineer with 12 years of experience in stormwater management, utility design, and hydrologic and hydraulic analyses.

Erin provides third-party reviews for Stormwater Management Plans for development projects in San Mateo, Santa Clara, and Alameda Counties to assist City staff to ensure that the development meets the requirements of the San Francisco Bay Municipal Regional Permit.

Selected Project Experience

Water Quality and Development Review

Third Party C.3 Review for SWM

Numerous clients

Third Party Inspections for C.3 Installation Compliance
City of Palo Alto

Third Party Inspections for C.3 Installation Compliance
City of Santa Clara

Third Party Inspections for C.3 Installation Compliance
City of Milpitas

Construction Administration

Old County Road Water Improvement Plans
Mid Peninsula Water District

Plan Set, RFI, and Submittal Reviews for Various Projects
City of Foster City

RFI and Submittal Reviews for Matadero Creek Stormwater Pump Station
City of Palo Alto

Hydrology & Hydraulics

Sunnyvale Storm Drain Mike Urban Modeling
Woodard & Curran

Sunnyvale East Channel Mike Urban Modeling
Sunnyvale

Dalton Road Drainage Assessment
City of Livermore

Serra Apartments BAHM Modeling
Civil Engineering Associates, Inc.

Pump Stations

Duke Fremont Sanitary Sewer Pump Station Design
Kier & Wright

Pescadero Trailer Storm Drain Pump Station Design
Kier & Wright

Evergreen Circle South Retail Storm Drain Pump Station Design
Ruth & Going

Equinix SV11 Storm Drain Pump Station Design
Ruth & Going

2961 Corvin Drive Santa Clara Pump Station Design
HMH

The Tillery Storm Drain Pump Station Design
Kier & Wright

Education

BS, Environmental Engineering, South Dakota School of Mines and Technology

MSCE, Water Resources, San Jose State University

Licenses

Registered Civil Engineer, California C90034

Colorado 62682

Software

AutoCAD Civil 3D, ArcGIS, BAHM, HEC-RAS, EPANET, EPA SWMM

Water Supply

Point Martin Water System Assessment
Maracor Development

Twin Valley Water System Analysis

Shops @ Terra On-Site Water Improvement Plans

Public Storage Stanley Boulevard Water Analysis
Ruggeri, Jensen, Azar Engineers

Sharks Ice Expansion (Rinks 5 and 6) Onsite Water Modeling and Sizing
Ruggeri, Jensen, Azar Engineers

Waters Tech Fire Analysis
Fairfield Train Station Development Water Analysis
Ruggeri, Jensen, Azar Engineers

Andrea Castro, PE Assistant Engineer



Andrea Castro has 11 years of experience providing engineering services. She has experience managing projects and preparing plans, specifications, cost estimates, calculations, and reports. Andrea has reviewed submittals and addressed requests for information during construction, remediation of contaminated sites, conducting maintenance of remediation systems, and hydrologic, soil, and air monitoring and sampling.

Her recent experience includes designing full trash capture devices for stormwater systems. She has developed hydrology models for proposed developments to size basins and provided numerous third-party reviews of Stormwater Management Plans (SWMPs) for agreement with the Municipal Regional Permit (NPDES, 2022) and any applicable local regulations for the SWMP to comply with NPDES C.3 standards.

Andrea has also conducted hydrology and hydraulic review for various developments as well as updated hydraulic models and analyzed pre- and post-project runoff from proposed developments to meet hydromodification requirements.

Selected Project Experience

MCSTOPPP Trash Capture
Marin County

Reviews for City of Oakley
HMH

Flea Market South Bridge
HMH

Monterey 8 Floodplain Study
City Ventures

SWMP Third-Party Reviews
Various Clients

RCD Housing
Floodplain Modeling

Envision II, LLC
No Rise Study

David J. Powers
CEQA Hydrology Report

Trash Capture
City of Livermore

RJA Montreaux
HMS and BAHM Modeling of
Detention Basin for HMP
Compliance

RJAA Tseng, Tracy Hills
HMS Modeling of Detention
Basin

CGAX, Heritage Oaks
BAHM Modeling for HMP
Compliance

FEMA CLOMR-fs, LOMR-fs
Various Clients

Google
Sunnyvale West Channel
Geomorphic Levee
Monitoring

Kier + Wright
Vallejo Hydrologic Study
using GIS and BAHM

Education

MS, Civil and Environmental
Engineering, Environmental
Processes, Cornell
University

BS, Environmental
Resources Engineering,
Humboldt State University

Licenses

Registered Environmental
Engineer, New Jersey
24GE05327400

Pennsylvania PE089202
Nevada 029874

Engineer-in-Training (Civil),
California, 129496

Software

GIS, AutoCAD, HMS, HEC-
RAS, BAHM

Kier + Wright
Pacific Gateway HMS
Modeling/H&H Reporting

Philadelphia Water
Department
Design of Green Stormwater
Infrastructure (GSI) for the
City of Philadelphia

Cameo Tsui, Assistant Engineer



Cameo Tsui has more than four years of experience at Schaaf & Wheeler. She has worked in flood protection, FEMA letter of map change analysis, pump station design, and hydrologic, floodplain, and storm drain modeling.

Selected Project Experience

Water Quality

City of San Mateo Poplar at Golf Course Trash Capture
City of San Mateo

San Rafael Kerner Pump Station Trash Capture Project
City of San Rafael

Third Party C.3 Stormwater Management Plan Reviews
Numerous clients (on-going)

Third Party Inspections for C.3 Installation Compliance
Numerous clients (on-going)

Hydraulics and Hydrology

City of Milpitas Storm Drain Master Plan
City of Milpitas

San Francisquito Creek and Storm Drain Modeling
City of Palo Alto

City of Livermore Swale Design
City of Livermore

Stochastic Analysis of Interim Dam Reliability, Anderson Dam Seismic Retrofit
Valley Water

King City Golf Course Design
City of King City

Hydrology and Hydraulic Study for BART Silicon Valley

Phase II Extension Project Design
Mott MacDonald

Lower Stevens Creek Levee Improvement Project
City of Mountain View

Pump Station

Salinas Ag-Industrial Industrial Waste and Sanitary Sewer Pump Stations Design
Ruggeri-Jensen-Azar

Richmond Gardens C.3 Storm Drain Pump Station Design
Kier & Wright

Evaluation of Marina Lagoon Pump Station
City of San Mateo

Floodplain Management

Singleton Road Bridge Floodplain Impact Analysis
Valley Water

City of Orinda Culvert Improvement Impact Analysis
City of Orinda

Historical Floodplain Analysis of Feather River, Yuba River, Bear River, WPRR System
Yuba County, California

Fremont Weir Cofferdam Scour Analysis
Yuba County, California

Education

Bachelor of Science in Biological Systems Engineering, UC Davis

Master of Science in Civil and Environmental Engineering, Stanford University

Licenses

Engineer-in-Training Certification No. 166196

Software

HEC-RAS, HEC-HMS, HEC-2, HEC-SSP, HEC-HMS, MIKE URBAN, WaterCAD, InfoWorks ICM, Innovyze H2OMap Water Model, HY-8, Bay Area Hydrology Model, FLO-2D, FHWA Hydraulic Toolbox, MODFLOW, EPANET, ArcGIS, MATLAB, AutoCAD, Civil 3D

Coastal Protection

Millbrae and Burlingame Shoreline Area Protection and Enhancement Project
San Mateo County Flood and Sea Level Rise Resiliency District (OneShoreline)

Redwood Shores Flood Hazards and Sea Level Rise Evaluation
Silicon Valley Clean Water

Water Supply

Montsalas Surge Analysis
Montsalas HOA

Arrive Fairfield Onsite Water
DK Engineering

Sandra Carroll, EIT Assistant Engineer



Sandra Carroll has over three years of experience in planning, design, and construction support for wastewater, stormwater, and potable water systems. She acts as a primary modeler for the development and analysis of Capital Improvement Projects with respect to developments, precise plans, and master plans.

Sandra also regularly assists with development/construction reviews, C3 SWMP reviews and inspections, and CEQA support for private development projects in San Joaquin, San Mateo, and Santa Clara County.

Selected Project Experience

Development Review and Management

Third Party C3 SWMP
Reviews and Inspections
Numerous Clients

Foster City on-call
Development Review and
Construction Review
City of Foster City

Foster City Water, Sewer,
and Storm Drain Standard
Detail Updates
City of Foster City

Potable Water Planning and Design

Castroville Seawater
Intrusion Project Water
System Analysis
E2 Consulting Engineers,
Monterey County Water
Resources Agency

LLNL Site 300 Zone 3 Water
System Improvement Design
and Modeling Support
Kier + Wright, Lawrence
Livermore National
Laboratory

Sandia National Laboratories
Campus Water System
Modeling and Planning
Kier + Wright, Sandia
National Laboratories

Jones and Oak Road Water
System Modeling and Design
Ruggeri-Jensen-Azar,
Summerhill Homes

Sanitary Sewer Planning and Design

CEQA Utility Impact Studies
and On Call Sanitary Sewer
Modeling Support
City of Mountain View

Sources of Storm Water
Inflow into Sanitary System
Study
City of Sunnyvale

Stormwater Planning and Design

Comprehensive Stormwater
Plan
Marin City

Education

BSCE, University of
California, Davis

Licenses

Engineer-in-Training 173398

Software

InfoWorks ICM, WaterCAD,
AutoCAD Civil 3D, ArcGIS
Pro

Pump Station Design

Mariposa Industrial Park
SDPS
Kier + Wright/ City of
Stockton

Fairfield Industrial Center
SDPS
Kier + Wright

Redwood Tech SSPS
Kier + Wright

Facebook Dumbarton
Campus SDPS
Kier + Wright

Vista Cove SSPS
Sansara

Floodplain Management/Sea Level Rise Protection

OneShoreline Coastal
Protection Analysis Report
San Mateo County Flood and
Sea Level Rise Resiliency
District

Valley Water Calabazas-San
Tomas Aqyubi Creek Marsh
Connection Project
Stillwater

M. Nasser Danishyar, Assistant Engineer



M. Nasser Danishyar, EIT began his career as an assistant civil engineer for the U.S. Army Corps of Engineers in Afghanistan, where he performed construction management and coordination with the USACE and other agencies. He also prepared and reviewed construction plans. Nasser has used CAD to develop construction plans. He has developed, recommended, and monitored corrective and preventive actions as well as planned, executed, and overseen inspection and testing of product to confirm quality and conformance to specifications and deliverables.

Selected Project Experience

Train Assist Advised
Command
US Army Corps of Engineers

Irene Drive & Vicinity Main
Replacement
Contra Costa Water District

Adobe Creek Sanitary Sewer
Main Replacement
City of Los Altos

Storm Drain Improvements
Project
City of Hermosa Beach

Lift Stations D06 & D10
Rehabilitation
Port of Oakland

Small Trash Capture System
City of San Mateo

1201 Runnymede
City of East Palo Alto

Education

MS, Civil Engineering,
Structure
Isfahan University of
Technology

BS, Civil Engineering
Herat University

Affiliations

Project Management
Professional (PMP) Certified
Engineer In Training (EIT)
Certified

Software

Revit, Civil 3D, AutoCAD 2D
and 3D, ArcGIS Pro,
InfoSWMM, InfoWater Pro,
EPANET, SketchUp,
Bluebeam Revu

Appendix B: Proof of Training

Caitlin J. Tharp (Gilmore), PE, QSD, QSP



From: Floodplain Management Association <admin@floodplain.org>
Sent on: Tuesday, April 9, 2024 8:02:13 PM
To: Caitlin Tharp <CTharp@swsv.com>
Subject: Floodplain Management Association - Thank you for your order



Caitlin Tharp,
Confirmation for the order placed on 4/9/2024.
[Click here](#) for a printable view of the order.

The following is a description of the order:
Order Number is: 667322760
Ordered 1 products (see below):

Product Number: Z7K1G6
Product: 2024 CEPSYM Member Registration
Quantity: 1
Price Each: \$300.00
Total Price: \$300.00

CASQA 2023 CONFERENCE - Professional Development Verification Form

- Put a check mark in the circle next to the crediting organization(s) below, and LEGIBLY print name, email address, and street address.
- Put a check mark in each time slot attended. Record the number of hours per day and the total hours for all days attended; not to exceed maximum hours noted.
- For CWEA Only: Complete form, scan, and email to CASQA@casqa.org. Certificates will be emailed to you following review and approval in approximately one month.
- For All Other Crediting Organizations: Complete and keep the form for your records. Go to the crediting organization's website for further instructions. (See [last page](#) of this document for the respective website links.)

Mark crediting organization(s): CESSWI CISEC CPESC CPISM CPMSM CPSWI CPSWQ CWEA MCLE PE

PRINT CLEARLY: Full Name Caitlin Tharp

Email ctharp@swsv.com

Street Address 10232 Donner Pass Road Suite 4

City Truckee

State CA ZIP 96161

MONDAY, SEPTEMBER 11, 2023

FIELD TOUR	Field Tour						
(4 hours)	✓EXAMPLE						
SESSION 1	TRACK: Stormwater Capture, Use, Green Infrastructure, and Nature-Based Solutions	TRACK: Funding	TRACK: BMP Effectiveness	TRACK: Construction General Permit	TRACK: Pollutants of Concern	TRACK: Modeling and Data Tools	TRACK: Regulatory and Legislation
11:00a-11:55a (1 hr)	✓EXAMPLE X						
SESSION 2	TRACK: Stormwater Capture, Use, Green Infrastructure, and Nature-Based Solutions	TRACK: Funding	TRACK: BMP Effectiveness	TRACK: Construction General Permit	TRACK: Pollutants of Concern	TRACK: Modeling and Data Tools	TRACK: Regulatory and Legislation
1:30p-2:25p (1 hr)					X		
SESSION 3	TRACK: Stormwater Capture, Use, Green Infrastructure, and Nature-Based Solutions	TRACK: Outreach, Engagement, and Education	TRACK: BMP Effectiveness	TRACK: Construction General Permit	TRACK: Pollutants of Concern	TRACK: Modeling and Data Tools	TRACK: Municipal Programs
2:35p-3:30p (1 hr)						X	
SESSION 4	TRACK: Stormwater Capture, Use, Green Infrastructure, and Nature-Based Solutions	TRACK: Outreach, Engagement, and Education	TRACK: Funding	TRACK: Construction General Permit	TRACK: Pollutants of Concern	TRACK: Regulatory and Legislation	TRACK: Municipal Programs
4:00p-4:55p (1 hr)						X	
MONDAY						TOTAL HOURS	4 hours E-IN
<small>(max. 4 hours)</small>							

TUESDAY, SEPTEMBER 12, 2023							
SESSION 5	TRACK: Stormwater Capture, Use, Green Infrastructure, and Nature-Based Solutions	TRACK: Outreach, Engagement, and Education	TRACK: Climate Change, Resiliency, and Sustainability	TRACK: Construction General Permit	TRACK: Monitoring and Special Studies	TRACK: Modeling and Data Tools	TRACK: Municipal Programs
8:30a-9:25a (1 hr)			X				
SESSION 6	TRACK: Stormwater Capture, Use, Green Infrastructure, and Nature-Based Solutions	TRACK: Outreach, Engagement, and Education	TRACK: Climate Change, Resiliency, and Sustainability	TRACK: Construction General Permit	TRACK: Monitoring and Special Studies	TRACK: Modeling and Data Tools	TRACK: Municipal Programs
9:35a-10:30a (1 hr)			X				
SESSION 7	TRACK: Stormwater Capture, Use, Green Infrastructure, and Nature-Based Solutions	TRACK: Outreach, Engagement, and Education	TRACK: Climate Change, Resiliency, and Sustainability	TRACK: Construction General Permit	TRACK: Monitoring and Special Studies	TRACK: Modeling and Data Tools	TRACK: Municipal Programs
11:00a-11:55a (1 hr)						X	
SESSION 8	TRACK: Stormwater Capture, Use, Green Infrastructure, and Nature-Based Solutions	TRACK: Equity and Environmental Justice	TRACK: Climate Change, Resiliency, and Sustainability	TRACK: Construction General Permit	TRACK: Pollutants of Concern	TRACK: Modeling and Data Tools	TRACK: Municipal Programs
1:30p-2:25p (1 hr)					X		
SESSION 9	TRACK: Stormwater Capture, Use, Green Infrastructure, and Nature-Based Solutions	TRACK: Equity and Environmental Justice	TRACK: Climate Change, Resiliency, and Sustainability	TRACK: Industrial General Permit	TRACK: BMP Effectiveness	TRACK: Monitoring and Special Studies	TRACK: Municipal Programs
2:35p-3:30p (1 hr)							X
SESSION 10	TRACK: Stormwater Capture, Use, Green Infrastructure, and Nature-Based Solutions	TRACK: Equity and Environmental Justice	TRACK: Climate Change, Resiliency, and Sustainability	TRACK: Industrial General Permit	TRACK: BMP Effectiveness	TRACK: Monitoring and Special Studies	TRACK: Municipal Programs
4:00p-4:55p (1 hr)			X				
					TUESDAY TOTAL HOURS 6 hours E-IN (max. 6 hours)		

WEDNESDAY, SEPTEMBER 13, 2023							
SESSION 11	TRACK: Stormwater Capture, Use, Green Infrastructure, and Nature-Based Solutions	TRACK: Looking Beyond California	TRACK: Climate Change, Resiliency, and Sustainability	TRACK: Industrial General Permit	TRACK: BMP Effectiveness	TRACK: Monitoring and Special Studies	TRACK: Municipal Programs
8:30a-9:25a (1 hr)			X				
SESSION 12	TRACK: Stormwater Capture, Use, Green Infrastructure, and Nature-Based Solutions	TRACK: Looking Beyond California	TRACK: Climate Change, Resiliency, and Sustainability	TRACK: Industrial General Permit	TRACK: BMP Effectiveness	TRACK: Monitoring and Special Studies	TRACK: Municipal Programs
9:35a-10:30a (1 hr)			X				
SESSION 13	TRACK: Stormwater Capture, Use, Green Infrastructure, and Nature-Based Solutions	TRACK: Funding	TRACK: Climate Change, Resiliency, and Sustainability	TRACK: Industrial General Permit	TRACK: BMP Effectiveness	TRACK: Monitoring and Special Studies	TRACK: Municipal Programs
11:15a-12:10p (1 hr)							
CAPSTONE SESSION	PANEL: Invited leaders from CASQA, CASA, SWRCB, CalEPA, WaterReuse California						
1:30p-2:30p (1 hr)							
					WEDNESDAY TOTAL HOURS 2 2 hours IN <small>(max. 4 hours)</small>		
					TOTAL TRAINING HOURS 12 12 hours IN <small>(max. 14 hours)</small>		

CASQA 2022 CONFERENCE - Professional Development Verification Form

Instructions:

- Put a check mark in the circle next to the crediting organization(s) below, and LEGIBLY print name, email address, and street address.
- Put a check mark in each session attended. Record the number of hours per day and the total hours for all days attended; not to exceed maximum hours noted.
- For CWEA Only: Complete form, scan, and email to CASQA@casqa.org. Certificates will be emailed to you following review and approval in approximately one month.
- For All Other Crediting Organizations: Complete and keep the form for your records. Go to the crediting organization's website for further instructions.

Mark crediting organization(s): CESSWI CISEC CPESC CPISM CPMSM CPSWI CPSWQ CWEA MCLE PE

PRINT CLEARLY: Full Name CAITLIN THARP

Email caitlin.jennine@gmail.com


Street Address 3550 Courchevel Rd #515B

City TAHOE CITY

State CA ZIP 96145

MONDAY, OCTOBER 24, 2022							
SESSION 1 (1 hr)	TRACK: BMP Effectiveness ✓EXAMPLE	TRACK: Resiliency and Sustainability ✓	TRACK: Industrial General Permit	TRACK: Pollutants of Concern	TRACK: Outreach, Engagement, and Education	TRACK: Anniversary	TRACK: Modeling and Data Tools
SESSION 2 (1 hr)	TRACK: BMP Effectiveness	TRACK: Resiliency and Sustainability	TRACK: Industrial General Permit	TRACK: Pollutants of Concern ✓	TRACK: Outreach, Engagement, and Education	TRACK: Anniversary	TRACK: Modeling and Data Tools
SESSION 3 (1 hr)	TRACK: BMP Effectiveness	TRACK: Resiliency and Sustainability	TRACK: Industrial General Permit	TRACK: Pollutants of Concern	TRACK: Outreach, Engagement, and Education	TRACK: Anniversary	TRACK: Modeling and Data Tools ✓
SESSION 4 (1 hr)	TRACK: BMP Effectiveness	TRACK: Resiliency and Sustainability	TRACK: Industrial General Permit	TRACK: Pollutants of Concern	TRACK: Outreach, Engagement, and Education		TRACK: Modeling and Data Tools ✓
TUESDAY, OCTOBER 25, 2022							
SESSION 5 (1 hr)	TRACK: Stormwater Capture, Use, and Green Infrastructure ✓	TRACK: Resiliency and Sustainability	TRACK: BMP Effectiveness	TRACK: Funding	TRACK: Municipal Programs	TRACK: Monitoring and Special Studies	TRACK: Modeling and Data Tools
SESSION 6 (1 hr)	TRACK: Stormwater Capture, Use, and Green Infrastructure ✓	TRACK: Regulatory and Legislation	TRACK: BMP Effectiveness	TRACK: Funding	TRACK: Municipal Programs	TRACK: Monitoring and Special Studies	TRACK: Modeling and Data Tools
SESSION 7 (1 hr)	TRACK: Stormwater Capture, Use, and Green Infrastructure	TRACK: Industrial General Permit	TRACK: Construction General Permit ✓	TRACK: Funding	TRACK: Municipal Programs	TRACK: Monitoring and Special Studies	TRACK: Modeling and Data Tools

SESSION 8 (1 hr)	TRACK: Stormwater Capture, Use, and Green Infrastructure	TRACK: Equity and Environmental Justice	TRACK: Construction General Permit	TRACK: Funding	TRACK: Municipal Programs ✓	TRACK: Monitoring and Special Studies	TRACK: Modeling and Data Tools
SESSION 9 (1 hr)	TRACK: Stormwater Capture, Use, and Green Infrastructure	TRACK: Equity and Environmental Justice	TRACK: Construction General Permit	TRACK: Funding	TRACK: Municipal Programs	TRACK: Monitoring and Special Studies	TRACK: Modeling and Data Tools
SESSION 10 (1 hr)	TRACK: Stormwater Capture, Use, and Green Infrastructure	TRACK: Equity and Environmental Justice	TRACK: Construction General Permit	TRACK: Funding	TRACK: Municipal Programs	TRACK: Monitoring and Special Studies	TRACK: Modeling and Data Tools
WEDNESDAY, OCTOBER 26, 2022							
SESSION 11 (1 hr)	TRACK: Stormwater Capture, Use, and Green Infrastructure ✓	TRACK: BMP Effectiveness	TRACK: Construction General Permit	TRACK: Outreach, Engagement, and Education	TRACK: Municipal Programs		
SESSION 12 (1 hr)	TRACK: Stormwater Capture, Use, and Green Infrastructure	TRACK: BMP Effectiveness ✓	TRACK: Regulatory and Legislation	TRACK: Outreach, Engagement, and Education	TRACK: Municipal Programs		
SESSION 13 (1 hr)	TRACK: Stormwater Capture, Use, and Green Infrastructure ✓	TRACK: Regulatory and Legislation	TRACK: Industrial General Permit	TRACK: Outreach, Engagement, and Education	TRACK: Municipal Programs		
SESSION 14 (1 hr)	TRACK: Stormwater Capture, Use, and Green Infrastructure	TRACK: Regulatory and Legislation	TRACK: Construction General Permit ✓	TRACK: Outreach, Engagement, and Education	TRACK: Municipal Programs		
SESSION 15 (1 hr)	TRACK: Stormwater Capture, Use, and Green Infrastructure		TRACK: Industrial General Permit	TRACK: Outreach, Engagement, and Education	TRACK: Municipal Programs		

CASQA VERIFICATION	
 CASQA OCT -- 2022 Annual Conference	<p>MONDAY TOTAL HOURS (maximum 4 hours) <u>4</u></p> <p>TUESDAY TOTAL HOURS (maximum 6 hours) <u>4</u></p> <p>WEDNESDAY TOTAL HOURS (maximum 5 hours) <u>4</u></p> <p>TOTAL TRAINING HOURS (maximum 15 hours) <u>12</u></p>

Robin J. Lee, PE

SMCWPPP Development (C.3) Workshop - June 18, 2024

	First Name	Last Name	Organization
93	Jim	Toby	Lea and Braze Engineering
94	Vergel	Galura	Macleod Associates
95	Dan	Koss	Macleod Associates
96	Adam	Price	Precision EC
97	Andrea	Castro	Schaaf & Wheeler
98	Nasser	Danishyar	Schaaf & Wheeler
99	Robin	Lee	Schaaf & Wheeler
100	Reid	Bogert	SMCWPPP - C/CAG
101	Mike	Mount	Sterling Consultants
102	Kevin	Torbet	Sterling Consultants
103	Peter	Vu	Sterling Consultants
104	Colleen	Hunt	Stone Creek Consulting
105	Tim	Au	Town Of Atherton
106	Will	Burse	Town Of Atherton
107	Irfan	Aziz	Town of Hillsborough
108	Doug	Belcik	Town of Hillsborough
109	Howard	Young	Town of Portola Valley
110	Muneer	Ahmed	Towns of Colma and Woodside

Andrea Castro, EIT

SMCWPPP Development (C.3) Workshop - June 18, 2024

	First Name	Last Name	Organization
93	Jim	Toby	Lea and Braze Engineering
94	Vergel	Galura	Macleod Associates
95	Dan	Koss	Macleod Associates
96	Adam	Price	Precision EC
97	Andrea	Castro	Schaaf & Wheeler
98	Nasser	Danishyar	Schaaf & Wheeler
99	Robin	Lee	Schaaf & Wheeler
100	Reid	Bogert	SMCWPPP - C/CAG
101	Mike	Mount	Sterling Consultants
102	Kevin	Torbet	Sterling Consultants
103	Peter	Vu	Sterling Consultants
104	Colleen	Hunt	Stone Creek Consulting
105	Tim	Au	Town Of Atherton
106	Will	Burse	Town Of Atherton
107	Irfan	Aziz	Town of Hillsborough
108	Doug	Belcik	Town of Hillsborough
109	Howard	Young	Town of Portola Valley
110	Muneer	Ahmed	Towns of Colma and Woodside

From: Zoom <no-reply@zoom.us>
Sent on: Thursday, October 12, 2023 7:24:40 PM
To: Andrea Castro <ACastro@swsv.com>
Subject: BAHM2023 Basic Training Confirmation



Hello Andrea Castro,

Thank you for registering for BAHM2023 Basic Training. You can find information about this meeting below.

BAHM2023 Basic Training

Date & Time	Oct 24, 2023 09:00 AM Pacific Time (US and Canada)
Meeting ID	876 2019 9773
Passcode	023386

From: Zoom <no-reply@zoom.us>
Sent on: Thursday, October 12, 2023 7:24:49 PM
To: Andrea Castro <ACastro@swsv.com>
Subject: BAHM2023 Advanced Training Confirmation



Hello Andrea Castro,

Thank you for registering for BAHM2023 Advanced Training. You can find information about this meeting below.

BAHM2023 Advanced Training

Date & Time	Oct 24, 2023 01:00 PM Pacific Time (US and Canada)
Meeting ID	837 3086 4552
Passcode	165946

Nasser Danishyar, EIT

SMCWPPP Development (C.3) Workshop - June 18, 2024

	First Name	Last Name	Organization
93	Jim	Toby	Lea and Braze Engineering
94	Vergel	Galura	Macleod Associates
95	Dan	Koss	Macleod Associates
96	Adam	Price	Precision EC
97	Andrea	Castro	Schaaf & Wheeler
98	Nasser	Danishyar	Schaaf & Wheeler
99	Robin	Lee	Schaaf & Wheeler
100	Reid	Bogert	SMCWPPP - C/CAG
101	Mike	Mount	Sterling Consultants
102	Kevin	Torbet	Sterling Consultants
103	Peter	Vu	Sterling Consultants
104	Colleen	Hunt	Stone Creek Consulting
105	Tim	Au	Town Of Atherton
106	Will	Burse	Town Of Atherton
107	Irfan	Aziz	Town of Hillsborough
108	Doug	Belcik	Town of Hillsborough
109	Howard	Young	Town of Portola Valley
110	Muneer	Ahmed	Towns of Colma and Woodside