

SCVURPPP 2021

# Newby Island Resource Recovery Park

4953-Refuse Systems

Rachel Hussey



*Environmental Services*



Delivering world-class utility services and programs to improve our health, environment, and economy.

# HISTORY

- 1938 Open Burn Dump
- 1956 Landfill Established
- 2041 Estimated Closure Date

# OPERATIONS

- 4,000 tons of municipal solid waste per day
- 65.9 million cubic yards capacity
- 245ft maximum height
- 342-acre footprint



# OPERATIONAL AREAS



SCCMap 2019 Base Layer

Delivering world-class utility services and programs to improve our health, environment, and economy.

# MATERIALS RECOVERY FACILITY

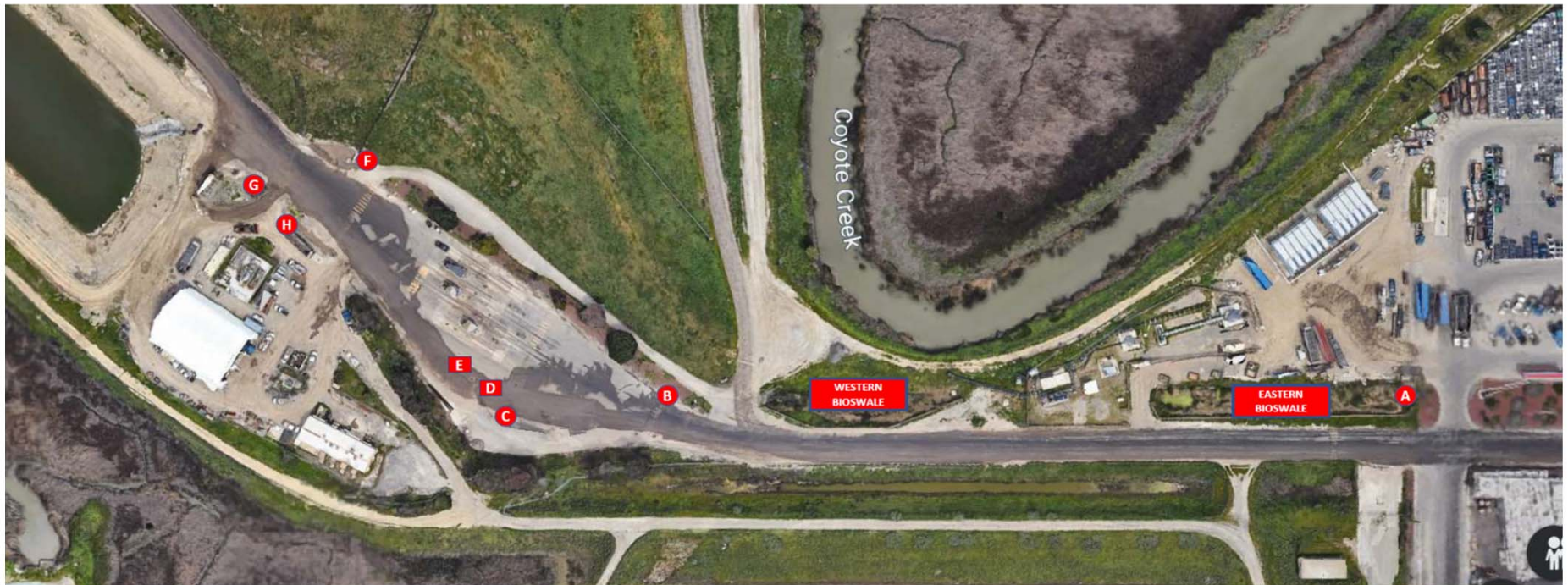
- 31 Inlets and Conveyances
- Garbage Truck Repair Shop



Delivering world-class utility services and programs to improve our health, environment, and economy.

# LANDFILL ENTRANCE

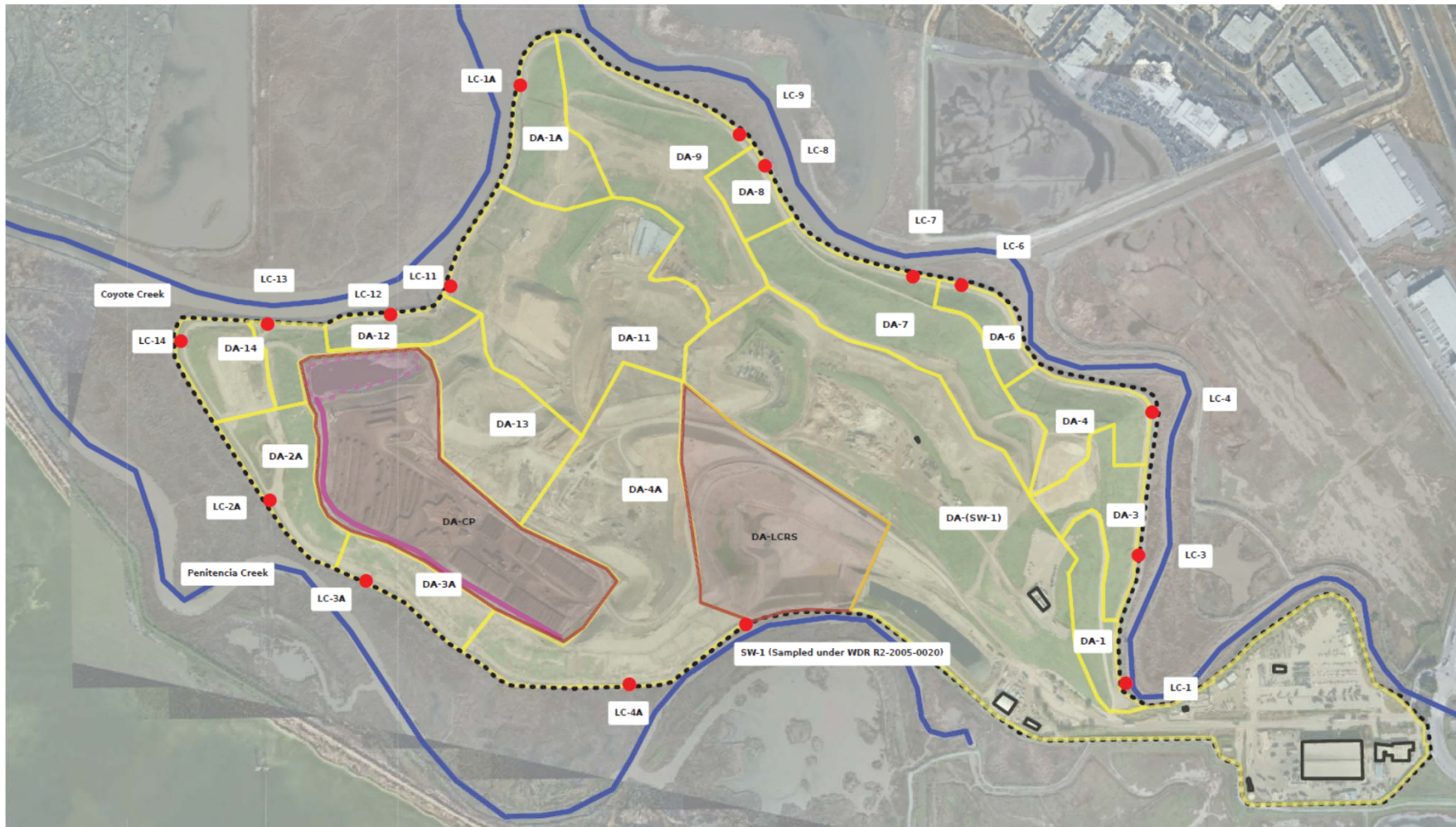
- 2 Bio Swales
- 8 Inlets around Weigh station & Landfill Equipment Repair Shop



Delivering world-class utility services and programs to improve our health, environment, and economy.

# LANDFILL

- 15 Storm Water Direct Discharge Outfalls
- 1 Intermittent Discharge Pumped from Sedimentation Basin



Delivering world-class utility services and programs to improve our health, environment, and economy.



# INSPECTION PREP

- Review previous violations and field notes
- Schedule inspection with Environmental Contact
- Review WDR
- Review the SWPPP:
  - Level II ERA - Mg, Se, N+N, COD
  - Level II Technical Report – Fe & Al
  - BMP's



# OBSERVATIONS

- Loose Litter
  - Public Complaint
  - Inspection
- Drain Maintenance
  - Sediment & Trash
  - Safe Drain Valve SOP
- Non-Storm Water Discharges
  - Deodorizer
  - Ground Water – Conditionally Exempt



# LOOSE LITTER

- Public Complaint
  - High Wind Event
  - BMP's Inadequate
- CSJ IDDE Inspector
  - Issued Referral for Citation
  - Requested SOP





# COMPLAINT



Delivering world-class utility services and programs to improve our health, environment, and economy.

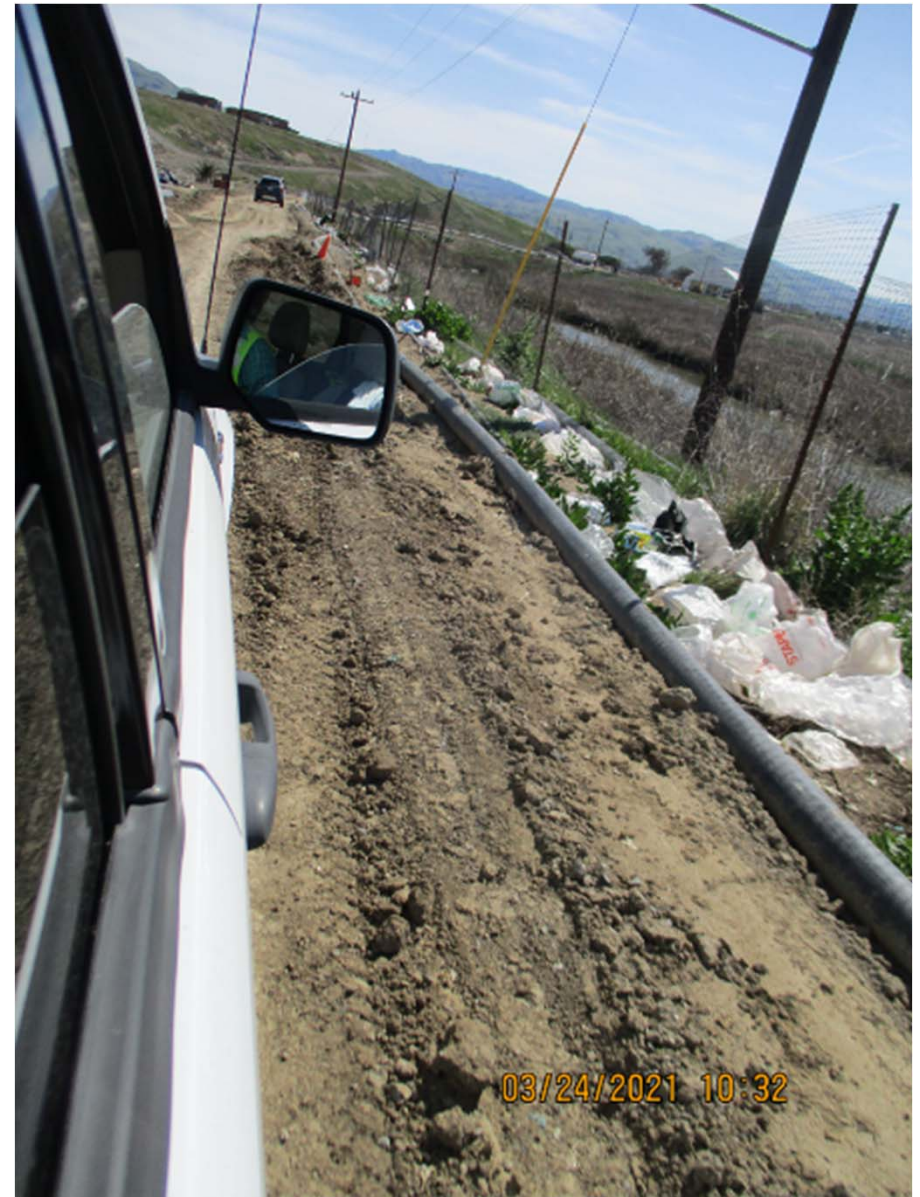


# COMPLAINT



Delivering world-class utility services and programs to improve our health, environment, and economy.

# INITIAL INSPECTION



Delivering world-class utility services and programs to improve  
our health, environment, and economy.

# INITIAL INSPECTION



Delivering world-class utility services and programs to improve our health, environment, and economy.

# LOOSE LITTER MANAGEMENT

- Continual abatement by 18 personnel over two shifts.
- Monitor weather conditions & respond appropriately.
- Ensure fencing is maintained.



Delivering world-class utility services and programs to improve our health, environment, and economy.

# WORKING FACE



Delivering world-class utility services and programs to improve our health, environment, and economy.

# DRAIN MAINTENANCE

- Sediment & Trash
- Safe Drain



Delivering world-class utility services and programs to improve our health, environment, and economy.

# LANDFILL CATCH BASIN



Delivering world-class utility services and programs to improve our health, environment, and economy.

# SAFE DRAIN

- Spill Containment
- Requires Maintenance
- Operational SOP



Delivering world-class utility services and programs to improve our health, environment, and economy.

# MRF – SAFE DRAINS



Delivering world-class utility services and programs to improve our health, environment, and economy.

# MRF – SAFE DRAINS



Delivering world-class utility services and programs to improve our health, environment, and economy.

# FOLLOW-UP INSPECTION



Delivering world-class utility services and programs to improve our health, environment, and economy.



# NON-STORMWATER DISCHARGES

- Deodorizer from MRF misting system
  - SDS: SL-950 Botanical
  - “Not expected to be harmful to the ecology”
- Ground Water – Covered by WDR

# DEODERIZER RUNOFF



Delivering world-class utility services and programs to improve our health, environment, and economy.

# DEODERIZER RUNOFF



Delivering world-class utility services and programs to improve our health, environment, and economy.

# GROUND WATER DISCHARGE



Delivering world-class utility services and programs to improve our health, environment, and economy.

# GROUND WATER DISCHARGE



Delivering world-class utility services and programs to improve our health, environment, and economy.

# QUESTIONS?



Delivering world-class utility services and programs to improve our health, environment, and economy.