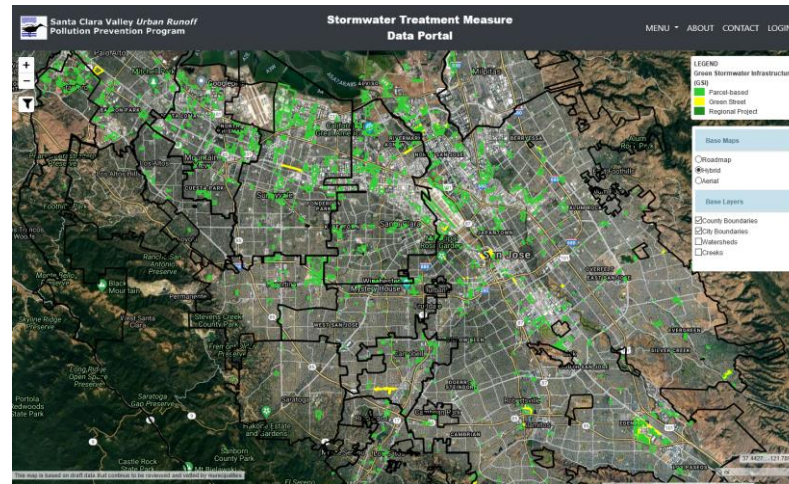


Stormwater Treatment Measure Data Portal



Kristin Kerr, P.E.
SCVURPPP

June 10, 2021

Outline of Presentation

- Overview
- Next Steps
- Data Portal Demo



Overview

- MRP C.3.j GSI Program Requirements
 - Process for tracking and mapping completed projects, public and private
 - Making information publicly available
- MRP C.11/C.12 PCBs/Mercury Load Reductions
 - Control Measure Plans
 - RAA

Overview

- Permittee GSI project tracking needed for
 - Annual reporting
 - O&M Inspections
 - Maintenance
- SCVURPPP project tracking
 - Data consistency
 - Tracking/reporting toward countywide GSI goals

Data Portal Development

- Management Committee & C3PO AHTG Feedback
- Began 2017
- Permittee access/user manual May 2019
- Public access September 2020
 - Changed name from “GSI Database” to “Stormwater Treatment Measure Data Portal”

Data Portal Development

- Updated with FY18/19 and FY19/20 projects March 2021
 - Continuing to add voluntary GSI projects
- Added GSI Analysis Tool May 2021
 - Permittees only
 - Under review; no comments received to date
 - Will go live soon!

Cloud-Based GIS Information Management System

Technical Decisions



Frontend/user interface

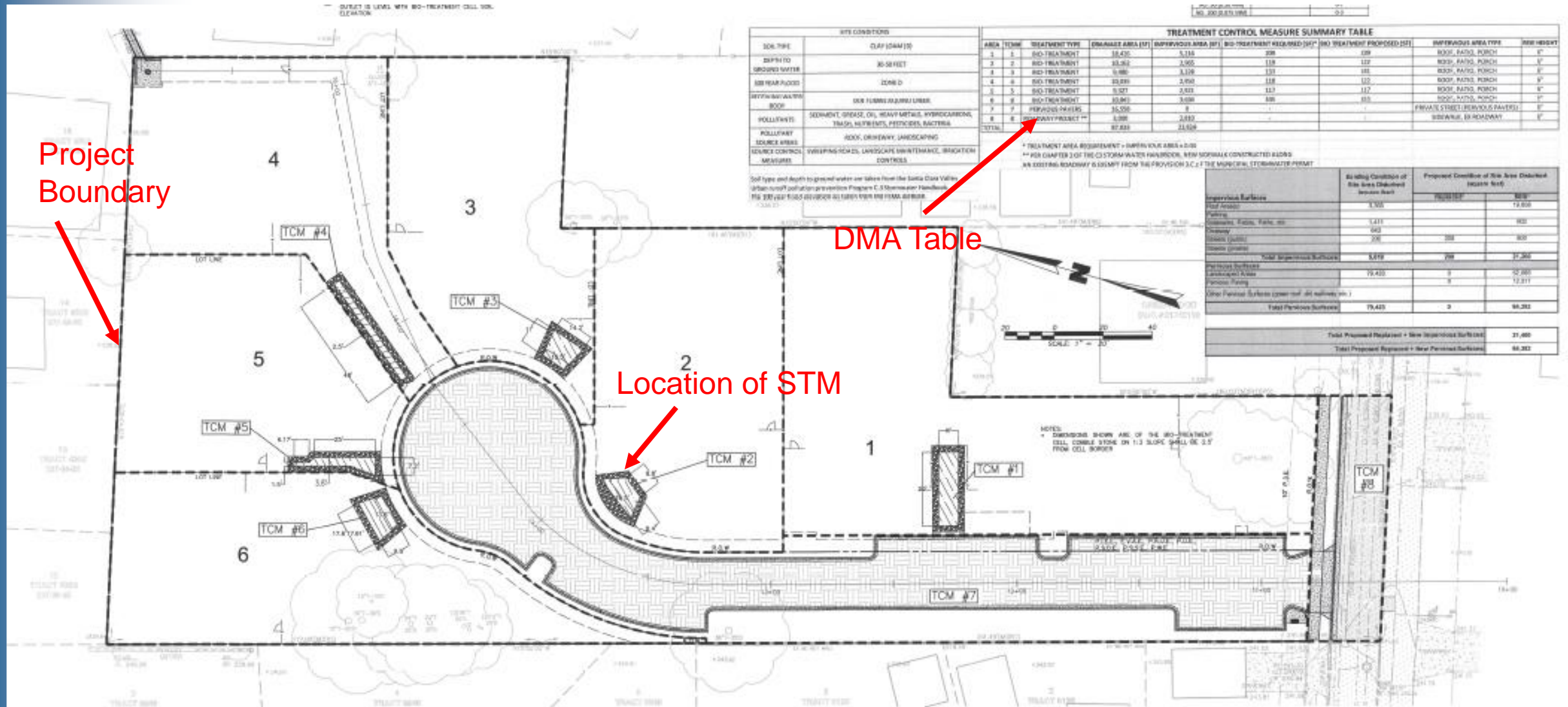


Backend/database

Data Portal Format

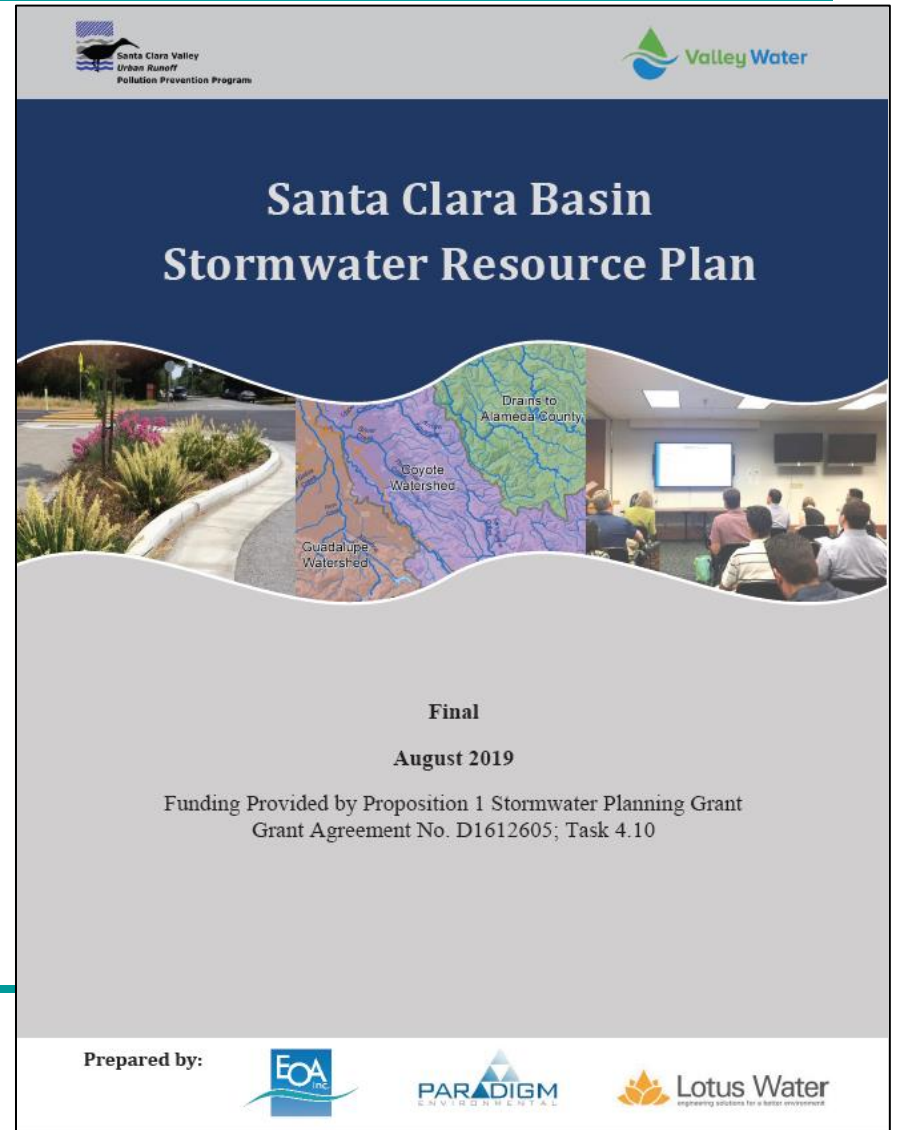
- Map
- Project Data
 - Browse
 - ✓ Summary table
 - ✓ Project details
 - Add Project Data
 - ✓ Add single project
 - ✓ Edit project data
 - ✓ Batch upload
 - Download Data
 - ✓ Excel file
 - ✓ GIS Shapefile
 - ✓ Google Earth KML
- GSI Data Visualization Dashboard

GSI Project Data



New GSI Analysis Tool

- Potential GSI site analysis/comparison
 - Stormwater Resource Plan scoring metrics
 - LID/Green Streets/ Regional Projects
 - Export metrics comparison table for potential sites



Next Steps

- Continue working with Permittees to update data
 - Voluntary projects
 - FY20-21 Regulated Projects
- Include Trash Full Capture Systems for permittee tracking and public access
- Work with C3PO AHTG to identify enhancements to GSI Analysis Tool

Demonstration

- Access from www.scvurppp.org
- Public Access
 - Map
 - Data Visualization Dashboard
- Permittee Access
 - Map & Dashboard
 - Project Data
 - GSI Analysis Tool

Contact Information

Kristin Kerr, P.E.

kakerr@eoainc.com

510-832-2852 x122

