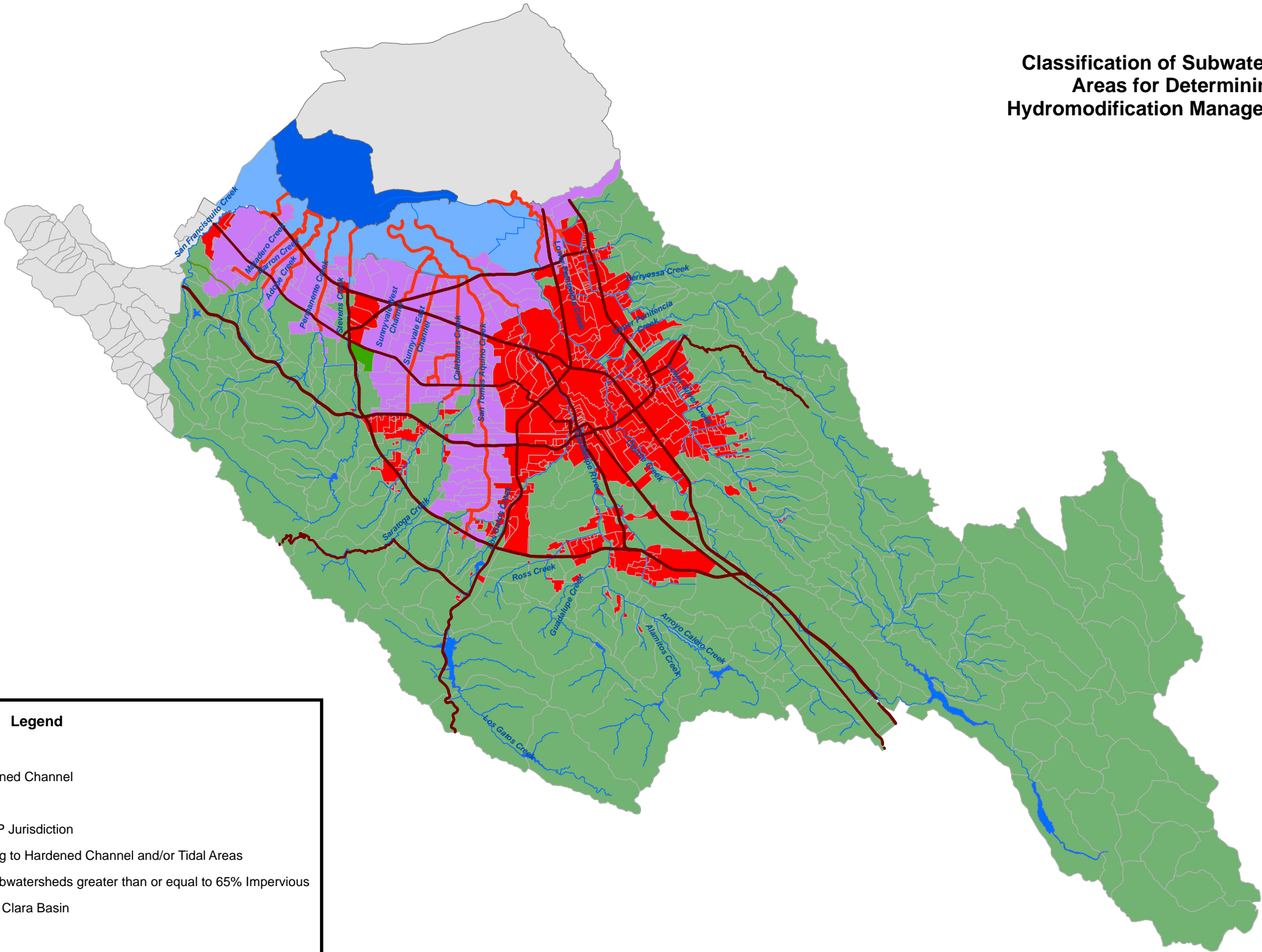


Classification of Subwatersheds and Catchment  
Areas for Determining Applicability of  
Hydromodification Management (HM) Requirements



Legend

- Major Roads
- Continuously Hardened Channel
- Major Creeks
- Outside SCVURPPP Jurisdiction
- Catchments Draining to Hardened Channel and/or Tidal Areas
- Catchments and Subwatersheds greater than or equal to 65% Impervious
- Reservoirs in Santa Clara Basin
- Baylands
- Subwatersheds less than 65% Impervious

Revision Date: November 2010

This map contains revisions to the March 2009 version to reflect updated impervious surface data and/or catchment boundaries in the Cities of San Jose, Sunnyvale, Mountain View, and Milpitas, as described in the report to the Water Board dated October 14, 2010, consistent with the HM applicability criteria set forth in Attachment F, Section 4 of the MRP.