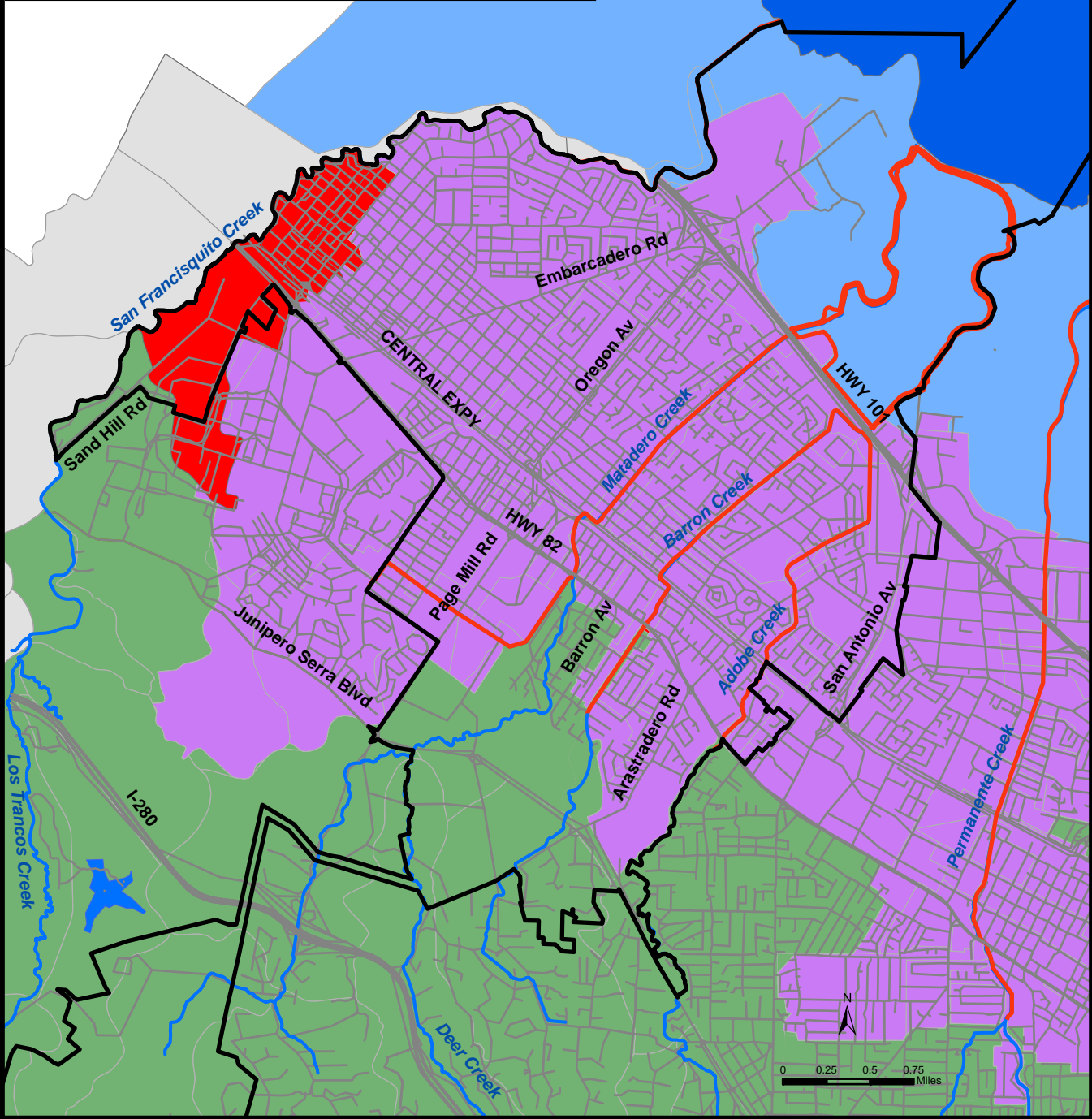


HMP APPLICABILITY MAP CITY OF PALO ALTO

Legend

- Continuously Hardened Channel
- Major Creeks
- Roads and Highways
- Jurisdictional Boundary
- Catchments Draining to Hardened Channel and/or Tidal Areas
- Catchments and Subwatersheds \geq 65% Imperviousness
- Subwatersheds less than 65%
- Outside SCVURPPP Jurisdiction
- Baylands
- Reservoirs in Santa Clara Basin

Date: November 2010



HMP APPLICABILITY MAP CITY OF PALO ALTO

- Legend**
- Continuously Hardened Channel
 - Major Creeks
 - Roads and Highways
 - Jurisdictional Boundary
 - Catchments Draining to Hardened Channel and/or Tidal Areas
 - Catchments and Subwatersheds \geq 65% Imperviousness
 - Subwatersheds less than 65%
 - Outside SCVURPPP Jurisdiction
 - Reservoirs in Santa Clara Basin

Date: November 2010

