

State Industrial Stormwater General Permit



Commercial/Industrial & IDDE Stormwater
Inspector Training

May 20, 2015

Kristin Kerr
EOA, Inc.

The Clean Water Act

- Requires a Permit to discharge into Waters of the U.S. from Point Sources
 - Industrial Facilities
 - Wastewater Treatment Plants
- NPDES (National Pollutant Discharge Elimination System) Permits



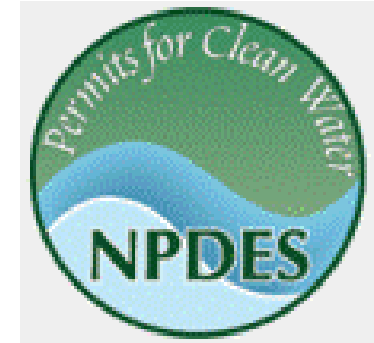
1986 Amendments: Stormwater Nonpoint Source

- Requires **permits to discharge stormwater** from:
 - Municipal Separate Storm Sewer Systems (MS4)
 - Industrial Facilities
 - Construction Sites
- NPDES **Stormwater** Permits

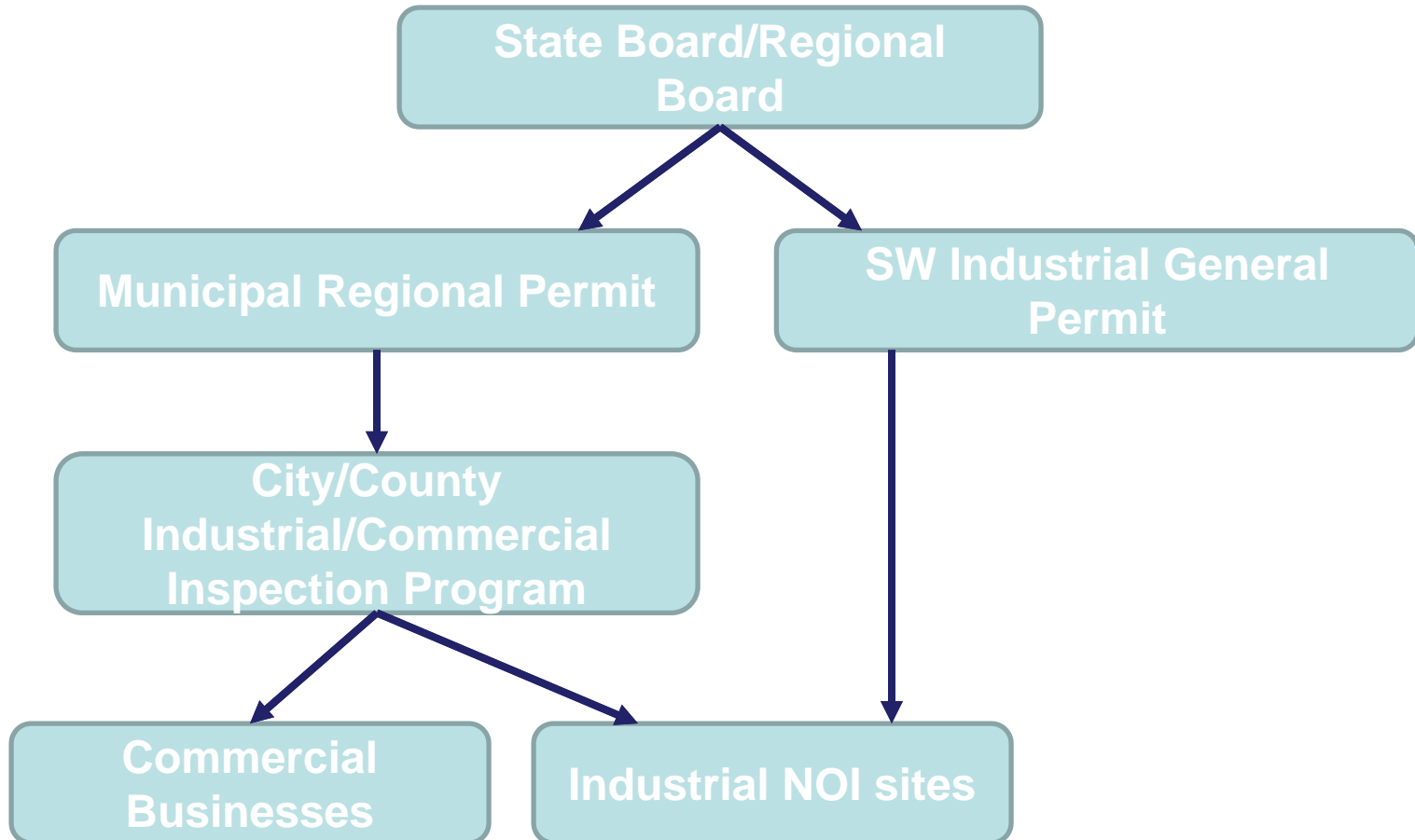


NPDES Stormwater Permits

- Regional Board issues
 - Individual
 - Regional
 - Municipal Regional Permit (MRP)
- State Board issues Statewide Permits
 - Industrial General Permit (IGP)
 - Construction General Permit (CGP)
 - Phase II MS4 General Permit



Industrial Facility Regulatory Landscape



Statewide General Permits

- NPDES authority issues one permit
- Used to cover same or similar operations
- Facilities/municipality applies for coverage
- Facilities/municipality submits Notice of Intent (NOI)



Statewide Industrial Activities SW General Permit (IGP)

- Current Permit adopted 1997
- Permit reissued by State Board April 2014
- Implementation date: July 1, 2015
- Every facility must submit NOI package by July 1st
- Compliance inspections & enforcement by Regional Water Board staff

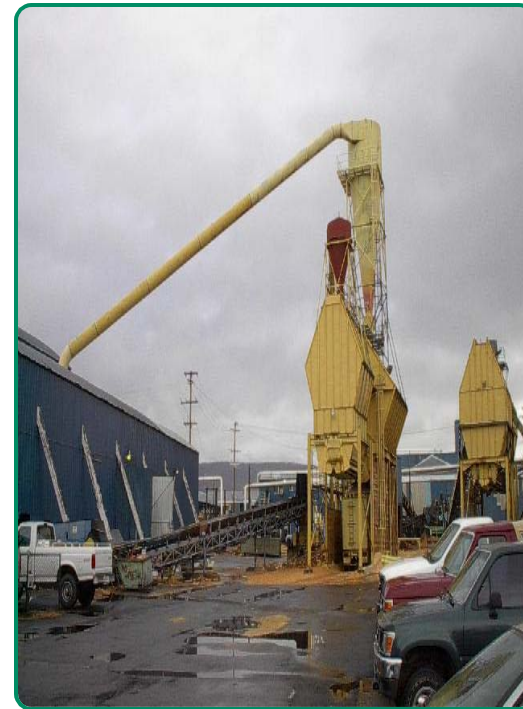


Industrial General Permit

- Applies to Industrial Facilities Listed in Appendix A of the Permit (by SIC code):
 - 40 CFR Subchapter N
 - Manufacturing Facilities
 - Oil & Gas/Mining Facilities
 - Hazardous Waste Treatment, Storage or Disposal Facilities
 - Landfills, Land Application Sites and Open Dumps
 - Recycling Facilities
 - Steam Electric Power Generating Facilities
 - Transportation Facilities
 - Sewage or Wastewater Treatment Works

Industrial General Permit

- Contains requirements for
 - Stormwater Pollution Prevention Plan (SWPPP)
 - Minimum BMPs
 - Monthly self inspections
 - Sampling
 - Reporting
 - Meet Action Levels



Monitoring Requirements

- Monthly Visual Observations
 - during dry weather
- Sample two Storm Events / half year
 - 4 events per reporting year
 - 2 events within July 1 – December 31
 - 2 events within January 1 – June 30
- Compliance Group Participants – one event/half year

Exceedance Response Actions (ERAs)

- Numeric Actions Levels (NALs)
 - Annual Average NALs
 - TSS, O&G, site specific parameters
 - Instantaneous Maximum NALs
 - TSS, O&G, pH
 - Discharger Status Levels
 - Baseline Status
 - Level 1 Status
 - Level 2 Status
 - ERA evaluation & action plans by QISP
-

QISP

- Qualified Industrial Stormwater Practitioner
 - Complete State Board approved Training
 - Courses available late 2015
 - Register on SMARTS
 - Required for Level 1 and 2 status work
 - Required for Compliance Group Leader



SMARTS

Stormwater **M**ultiple **A**pplication **R**eporting and **T**racking **S**ystem

- Permit Registration Documents
 - NOI
 - Site Map
 - SWPPP
- Annual Reports
- Level 1 and 2 ERA Reports

SMARTS LOGIN

[Web Browser Requirements](#)

User ID:

Password:

New User, Start here:

[Help](#)

Industrial Permit Recertification

[Click here](#)

Forgot User ID or Password?

[Click here](#)

Public Access to NOI, SWPPPs & Annual Reports data



Why do you need to know about IGP?

- MRP requires SW Inspectors to:
 - Evaluate if coverage is needed under the General Permit
 - Track if NOI was filed
 - Refer non-filers to RWB staff
 - Include NOI facilities in Business Inspection Plan

MRP Provision C.4
Industrial and Commercial Site Controls

Why do you need to know about IGP?

- IGP tools may help inform MRP inspections
 - Looking at SWPPP, maps, inspection records, sampling results, etc.
 - Speaking with QISP
 - CASQA Industrial/Commercial BMP Handbook Fact Sheets
 - Source Control BMPs Fact Sheets
 - Business Categories Fact Sheets

CASQA BMP Handbook

- SCVURPPP organized Group Subscription
- Your Stormwater Representative has login

Stormwater Best Management Practice Handbook Portal:
Industrial and Commercial

Outdoor Liquid Container Storage SC-31

Description

Accidental releases of materials from above ground liquid storage tanks, drums, and dumpsters present the potential for contaminating stormwater with many different pollutants. Tanks may store many potential stormwater runoff pollutants, such as gasoline, aviation gas, diesel fuel, kerosene, oils, greases, lubricants and other distilled, blended and refined products derived from crude petroleum. Materials spilled, leaked, or lost from storage tanks may accumulate in soils or on other surfaces and be carried away by rainfall runoff. These source controls apply to containers located outside of a building used to temporarily store liquid materials and include installing safeguards against accidental releases, installing secondary containment, conducting regular inspections, and training employees in standard operating procedures and spill cleanup techniques.

Approach

- General Pollution Prevention Protocols**
- o Educate employees about pollution prevention measures and goals.
 - o Keep an accurate, up-to-date inventory of the materials delivered and stored on-site.
 - o Try to keep chemicals in their original containers, and keep them well labeled.
 - o Develop an operations plan that describes procedures for loading and/or unloading. Refer to SC-30 Outdoor Loading/Unloading of Materials for more detailed BMP information pertaining to loading and unloading of liquids.
 - o Protect materials from rainfall, run-on, runoff, and wind dispersal:
 - ✓ Cover the storage area with a roof.

Objectives

- Cover
- Contain
- Educate
- Reduce/Minimize

Targeted Constituents

- Sediment ✓
- Nutrients ✓
- Trash ✓
- Metals ✓
- Bacteria ✓
- Oil and Grease ✓
- Organics ✓

Minimum BMPs Covered

- Good Housekeeping ✓
- Preventative Maintenance ✓
- Spill and Leak Prevention and Response ✓
- Material Handling & Waste Management ✓
- Erosion and Sediment Controls ✓
- Employee Training Program ✓
- Quality Assurance Record Keeping ✓



September 2014

California Stormwater BMP Handbook
Industrial and Commercial
www.casqa.org

1 of 9

BG-21 Automotive Service – Maintenance



Description

This category includes facilities that conduct general maintenance and repair on vehicles including:

- General repair shops
- Radiator repair shops
- Car dealerships
- Car washes
- Fleet maintenance operations

Information specific to: auto dismantling, body repair, and service stations is provided in other guide sheets.

Pollutant Sources

The following are sources of pollutants:

- Changing oil and other fluids
 - Cleaning engines and parts
 - Flushing radiators
 - Washing cars and other vehicles
- Pollutants can include:
- Heavy metals (copper, lead, nickel, and zinc)
 - Hydrocarbons (oil and grease, PAHs)
 - Toxic chemicals (solvents, chlorinated compounds, glycols)
 - Acids and alkalis



September 2014

California Stormwater BMP Handbook
Industrial and Commercial
www.casqa.org

1 of 9

Why do you need to know about IGP?

- Overall site compliance reflects on your inspection program
 - You inspect for compliance with local SW ordinance
 - Regional Board staff inspects for compliance with IGP



NOI Facilities

- MRP: Include NOI facilities in your Business Inspection Plan
 - that have reasonable likelihood to be sources of pollutants to SW and non-SW discharges
- Find facilities in your city on State Board website
<https://smarts.waterboards.ca.gov/smarts/faces/SwSmartsLogin.jsp>

Water Boards Storm Water Multiple Application & Report Tracking System 2

Storm Water Regional Board Data File Download

Regional Board: ▼

Select Region and download a tab delimited text file

© 2012 State of California. [Conditions of Use](#) [Privacy Policy](#)



NOI Facilities

- MRP: Evaluate if industrial facility needs coverage under State General Permit
 - Previous Permit “Category 10”
 - Manufacturing facilities where industrial materials, equipment, or activities are exposed to storm water
 - SIC codes 20, 21, 22, 23, 2434, 25, 265, 267, 27, 283, 285, 30, 31 (except 311), 323, 34 (except 3441), 35, 36, 37 (except 373), 38, 39 and 4221-4225
 - New Permit combines Category 2 & 10
 - SIC codes 20XX - 39XX, and 4221-4225
-

NOI Facilities

- All facilities must file NOI package
 - Previously Category 10 facilities did not have to file if no exposure
- NOI package can include
 - No Exposure Certification (NEC)
 - Notice of Non-Applicability (NONA) = No Discharge

NOI Facilities

- MRP: List non-filers in Annual Report
- All Attachment A facilities must file
 - May need to educate some Category 2 facilities that were previously Category 10

Types of NOI Facilities

SIC Code		Alameda	Contra Costa	San Mateo	Santa Clara	Total
01-09	Agriculture, Forestry & Fishing		1			1
10-14	Mining	7	6	7	5	25
15-17	Construction	6			1	7
20-39	Manufacturing	195	52	34	202	483
40-49	Transportation, Communications, Electric, Gas & Sanitary Services	117	56	44	94	311
50-51	Wholesale Trade	66	29	12	60	167
52-59	Retail Trade	1	1			2
70-89	Services	11	3	1	4	19
91-99	Public Administration	2				2
	Not Provided	5		2	1	8

Types of NOI Facilities

City	SIC Code						Grand Total	
	10-14	15-17	20-39	40-49	50-51	70-89		Not Provided
Campbell				2	2			4
Cupertino	1		2					3
Los Gatos	1			1	1			3
Milpitas		1	19	3	2			25
Morgan Hill			1					1
Mountain View			3	5	1			9
Palo Alto			9	3		1		13
San Jose	3		80	62	46	3	1	195
Santa Clara			58	12	7			77
Saratoga			2					2
Sunnyvale			25	5				30
Total	5	1	202	94	60	4	1	367



Types of NOI Facilities

Category (Previous Permit)		Alameda	Contra Costa	San Mateo	Santa Clara	Total
2	Manufacturing	86	32	17	60	195
3	Oil and Gas / Mining	7	7	7	5	26
5 (or 4)	Landfills (or HW Treatment, Storage or Disposal Facilities)	5	10	8	15	38
6	Recycling	64	24	7	52	147
8	Transportation	102	43	35	76	256
9	Sewage or Wastewater	1	2	3		6
10	Manufacturing (exposed to stormwater)	103	20	17	141	281
	Other	42	10	6	18	76
	Total	410	148	100	367	1025

Manufacturing Facilities

SIC Codes		Alameda	Contra Costa	San Mateo	Santa Clara	Total
20xx	Food and Kindred Products	26	3	2	9	40
21xx	Tobacco Products					
22xx	Textile Mill Products	1				1
23xx	Apparel, Finished Prdcts from Fabrics & Similar Materials	1				1
24xx	Lumber and Wood Products, Except Furniture	5	1		7	13
25xx	Furniture and Fixtures	2				2
26xx	Paper and Allied Products	11			3	14
27xx	Printing, Publishing and Allied Industries	3			1	4
28xx	Chemicals and Allied Products	38	10	7	12	67
29xx	Petroleum Refining and Related Industries	5	5	4	6	20
30xx	Rubber and Miscellaneous Plastic Products	4	1	2	3	10
31xx	Leather and Leather Products					
32xx	Stone, Clay, Glass, and Concrete Products	29	10	8	26	73
33xx	Primary Metal Industries	11	4	2	9	26
34xx	Fabricated Metal Prdcts, Except Machinery & Transport Eqpmnt	25	5	4	27	61
35xx	Industrial and Commercial Machinery and Computer Equipment	6	3	1	15	25
36xx	Electronic, Elctrcl Eqpmnt & Cmpnts, Excpt Computer Eqpmnt	12	1	2	76	91
37xx	Transportation Equipment	14	4		4	22
38xx	Mesr/Anlyz/Cntrl Instrmnts; Photo/Med/Opt Gds; Watches/Clocks		4	2	2	8
39xx	Miscellaneous Manufacturing Industries	2	1		2	5

For More Information

- Industrial General Permit-
http://www.swrcb.ca.gov/water_issues/programs/stormwater/industrial.shtml
- Municipal Regional Permit
www.waterboards.ca.gov/sanfranciscobay
- Santa Clara Valley Urban Runoff Pollution Prevention Program www.scvurppp.org
- CASQA Industrial/Commercial BMP Handbook
<https://www.casqa.org/resources/bmp-handbooks/industrial-commercial>
- Contact: Kristin Kerr 510-832-2852 ext 122
kakerr@eoainc.com

