



CASE SCENARIO:

Urban Winery IDDE

Michael Lothian
Environmental Compliance Inspector
City of Sunnyvale

You are planning your busy week, when you receive a call from your City's Hazardous Materials Inspector. They inform you that the Fire Department responded to an illicit discharge over the weekend, consisting of wine and rinse water.

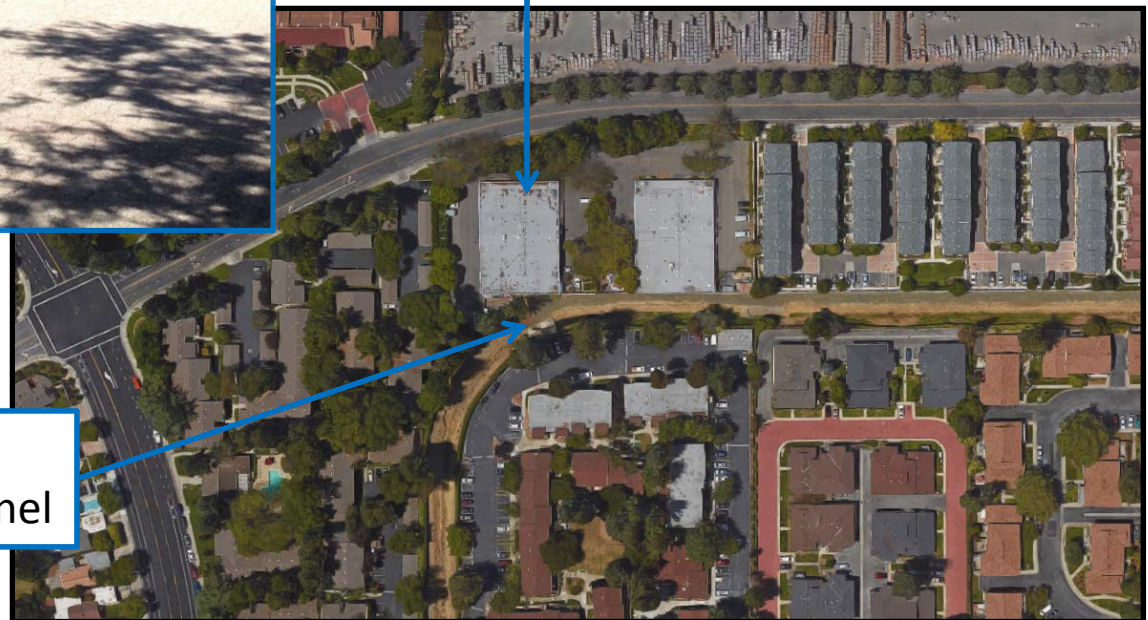


Location:

An unlabeled unit located in a small business park

Estimated Volume:

250 – 300 gallons



Santa Clara County
Flood Control Channel

When you arrive onsite to conduct your investigation, you notice some stains on the pavement and a sweet aroma coming from one of the private storm drain inlets.

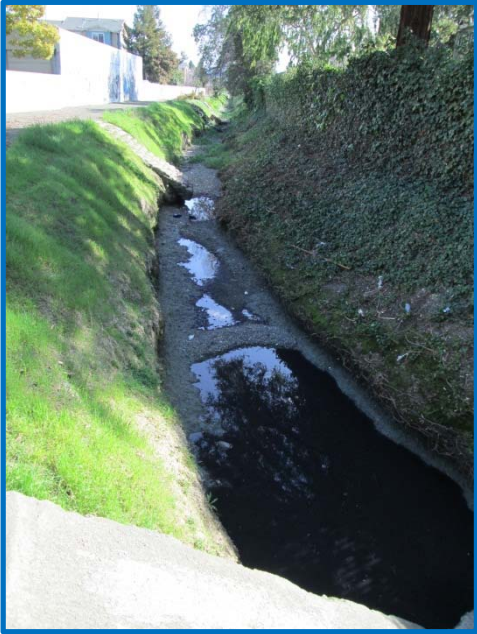
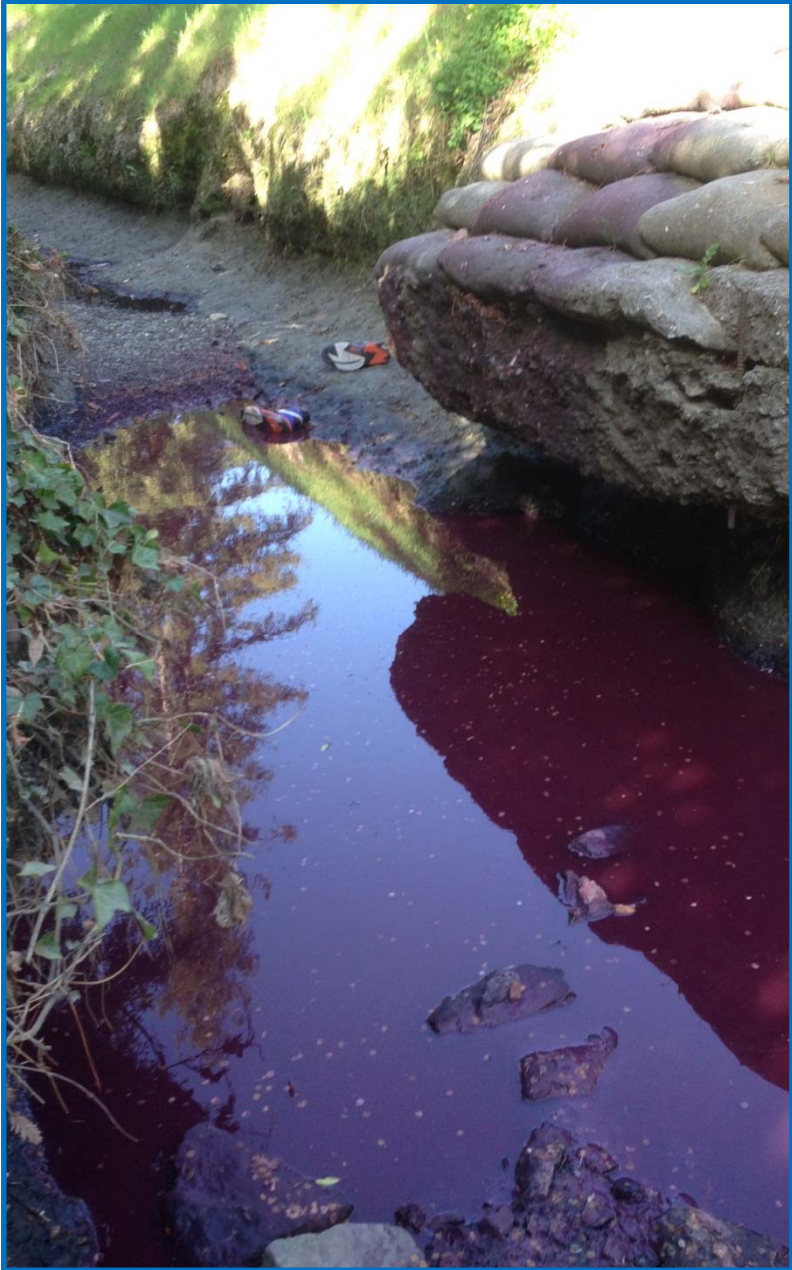


You then head over to the flood control channel to continue your investigation. As you near the discharge area the sweet aroma becomes stronger, and you discover several large pools containing a dark red liquid.

The pH of the liquid is 3.8 su.



Impact to the channel:



You contact the winery and learn that the discharge was associated with the barrel cleaning process. The pH of the wine making byproduct is typically between 3-4 and an acid-based cleaning product is used to sterilize the equipment. The winery staff was unaware that the drain was connected to the storm drain system, and due to the large volume of liquid, they decided to do the cleaning outside.

Questions:

1. Which agencies should have been notified and who has jurisdiction over the incident?
2. What corrective actions should be taken for this incident?
3. What are the appropriate education and enforcement actions?
 - a) The release was contained in the channel and did not reach the receiving water.
 - b) The release did reach the receiving waters.





Initial Cleanup effort by Santa Clara Valley Water District.



Cleaned and newly labeled storm drain inlets.



A few months down the road – Good as New!