

Case Scenario

Supermarket – Food Service Establishment (FSE)

Joshua Villa
Environmental Inspector
Watershed Enforcement
May 20, 2015



San José-Santa Clara
Regional Wastewater Facility



Environmental Services

Delivering world class utility services and programs to improve our health, environment, and economy



Island Pacific Supermarket
November 05, 2014 10:46 AM

This is a locally owned supermarket and FSE



Initial Inspection

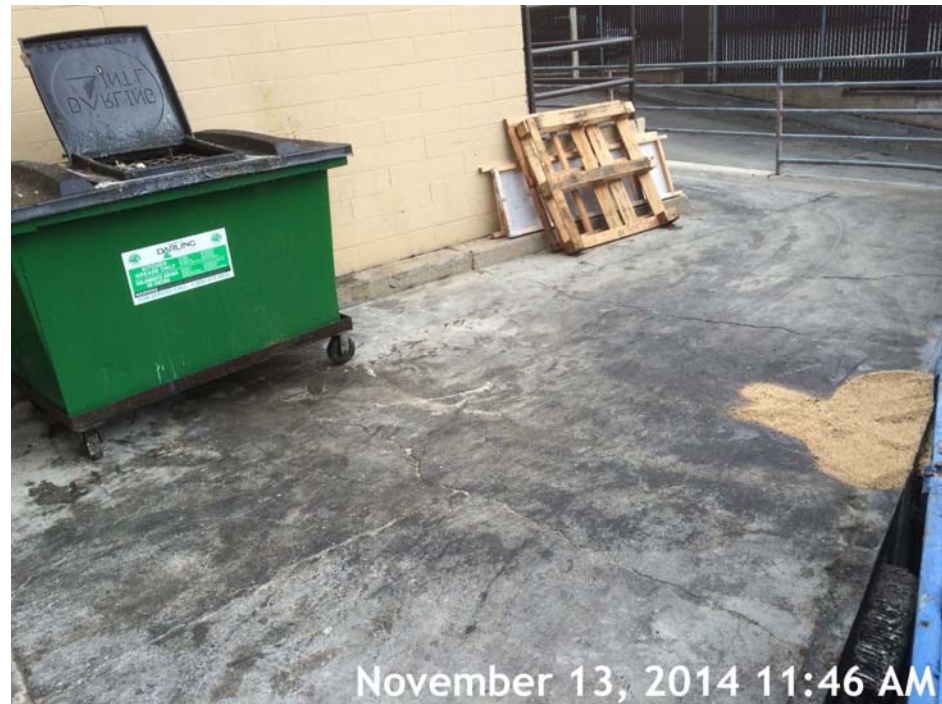


Island Pacific Supermarket
November 05, 2014 10:29 AM



Island Pacific Supermarket
November 05, 2014 10:30 AM





Upon the follow up, tallow bin grease and left over absorbent is on the move, and leaky bins are still on site...





Discharge from activities in their loading dock may easily flow to the nearby stenciled catch basin...





November 13, 2014 11:50 AM

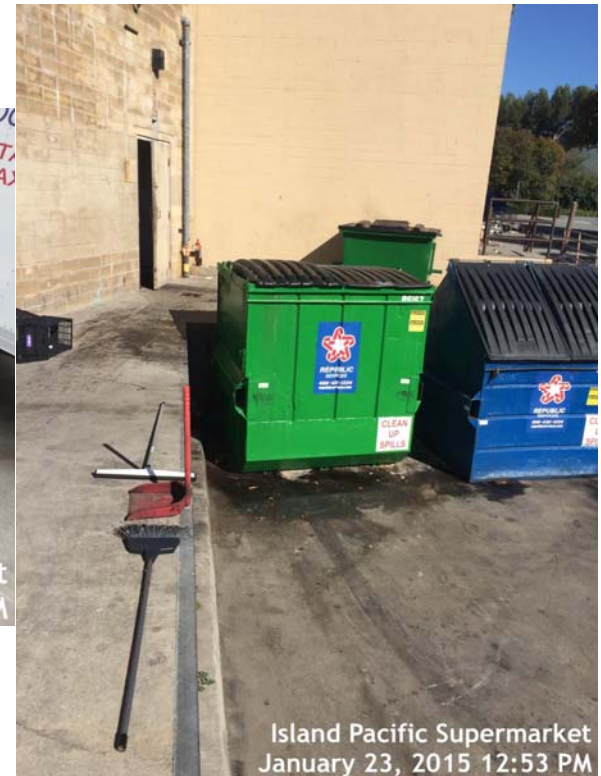


San José-Santa Clara
Regional Wastewater Facility



Outdoor tallow bin storage, greasy spills, and absorbent...





Three inspections with the same reoccurring issue...



San José-Santa Clara
Regional Wastewater Facility



Island Pacific Supermarket
January 23, 2015 12:53 PM



- What are your findings?
- What enforcement action would you take?
- Are there any BMPs that you would recommend?
- Would you do anything differently if the storm drain had been a block away instead of right in front of the site?



City of San Jose's Response

Supermarket management and staff were trained on storm water pollution prevention practices, proper spill clean up techniques, and storage options for the tallow bin.

The following violation and remedial actions were also issued:

- Garbage can/compactor/dumpsters/recycle bins/scrap bin/tallow bin
 - Repair
 - Clean up using dry method and properly dispose of spills, discharges, tracked sediment, leaks, stains, process residues, and debris.
- Parking Lot/yard
 - Clean up using dry method and properly dispose of spills, discharges, tracked sediment, leaks, stains, process residues, and debris.

An Official Warning Notice was issued for the parking lot violation and three Referrals for Administrative Citation were issued.

- Only one Administrative Citation was pursued.



Final Follow-up Inspection

- Parking lot oil spills were cleaned up using dry methods and properly disposed of.
 - Leaky trash bin was replaced.
 - Tallow bin grease spills were cleaned up using dry methods and disposed of properly.
 - Tallow bin was moved inside of the building.
- *No pictures were taken of the final follow-up inspection





The End 😊



San José-Santa Clara
Regional Wastewater Facility

