



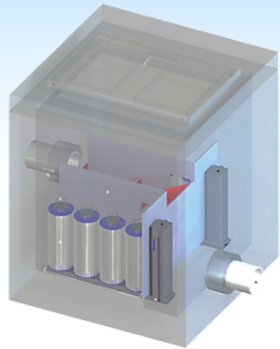
Proven Stormwater Treatment Technology



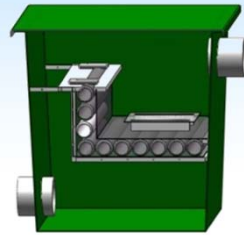


# The Stormwater Tool Box

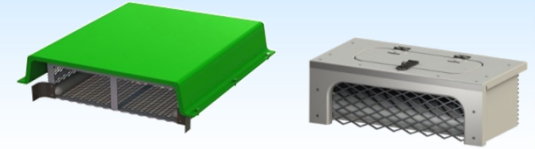
**KRAKEN MEMBRANE FILTER**



**INLINE MEDIA FILTER**



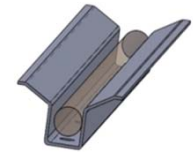
**FLUME FILTERS**



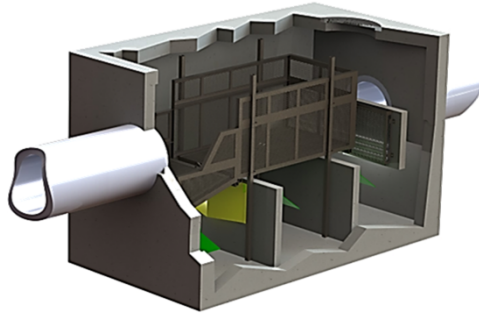
**CURB INLET BASKET With Shelf System**



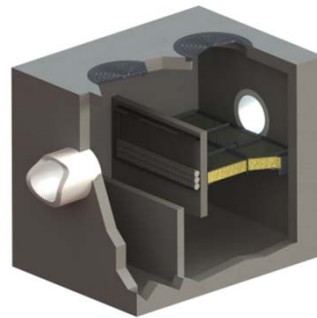
**TRENCH DRAIN FILTER**



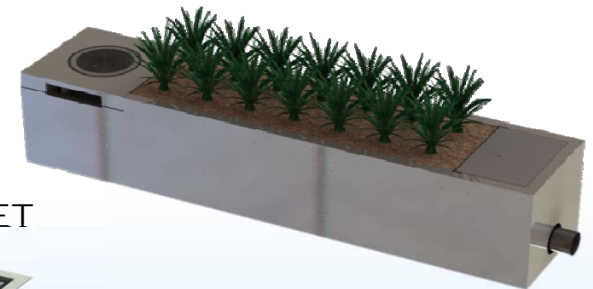
**NUTRIENT SEPARATING Baffle BOX**



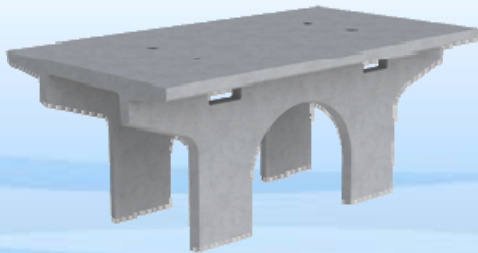
**+ WATER POLISHER UP FLOW TECHNOLOGY**



**MODULAR WETLANDS**



**STORMTRAP**



**DOWNSPOUT FILTER**



**GRATE INLET SKIMMER BASKET**

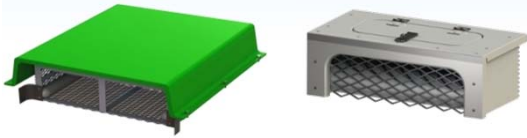


**CURB GUARD**

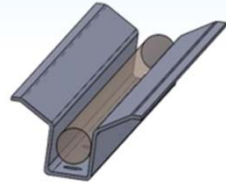


# LID Product Tool Box

FLUME FILTERS



TRENCH DRAIN FILTER



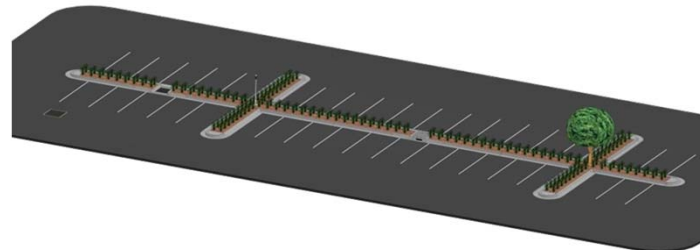
CURB GUARD



GRATE INLET SKIMMER BASKET



WETLAND MOD



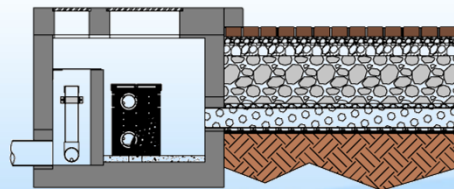
MODULAR WETLANDS



UBR

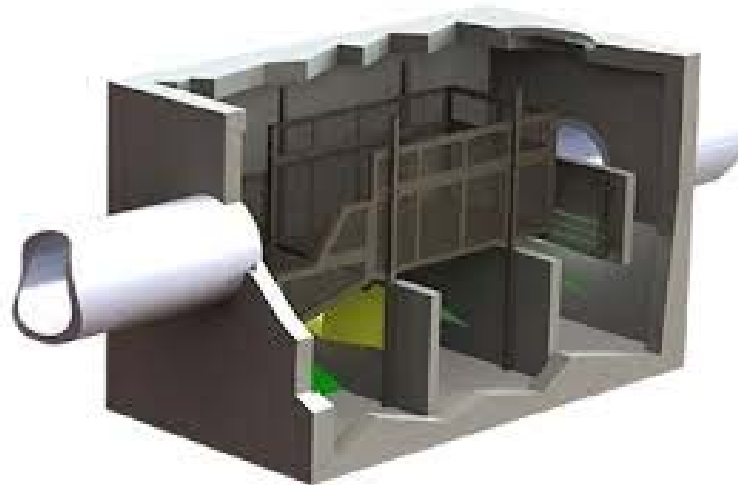


WETPAVE



# Full Capture Requirements

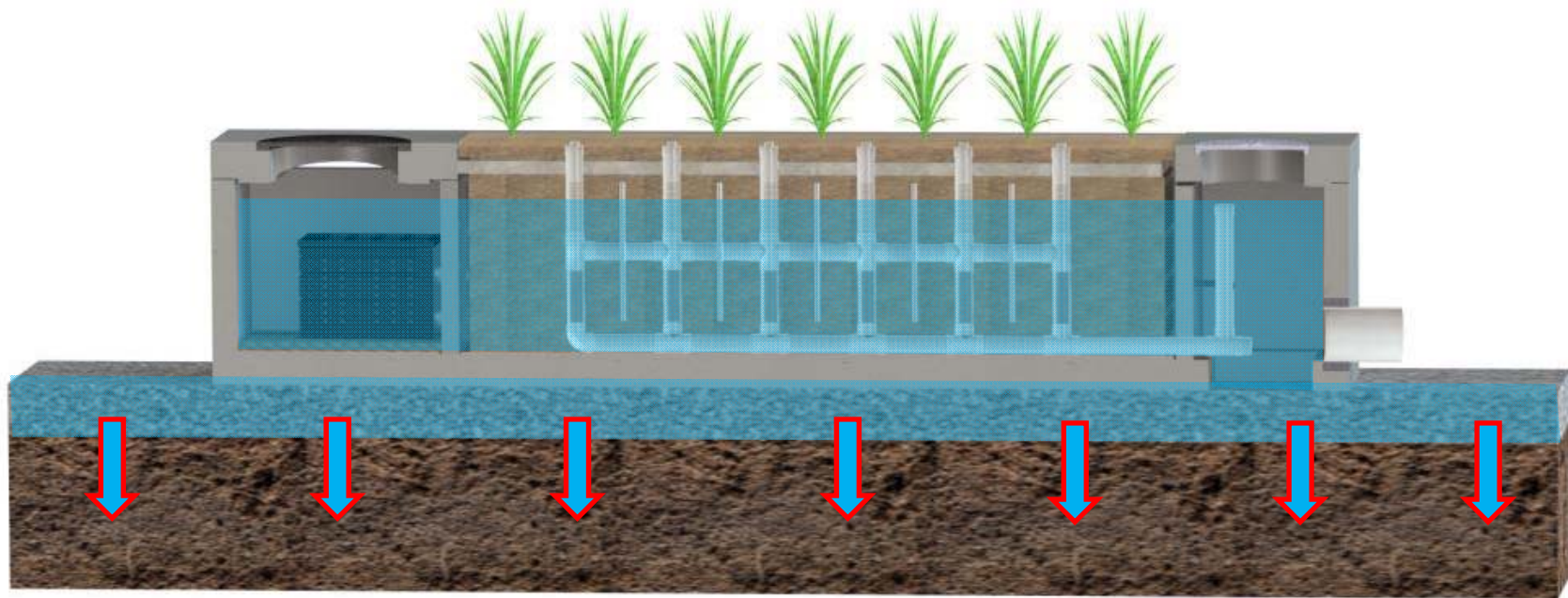
## Approved Full Capture Trash & Debris Devices



M A R  
WETLANDS



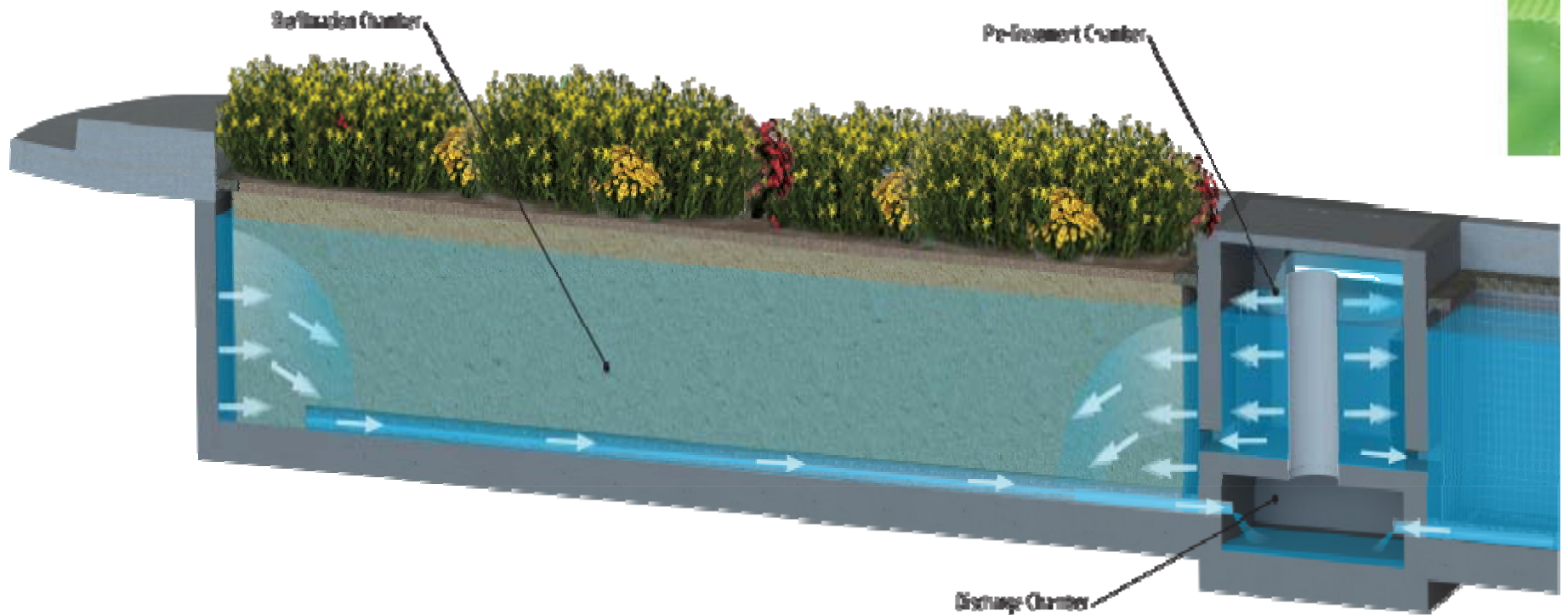
# Modular Wetland System Linear – Flow Based Design



**Available with Open Bottom to Maximize  
Partial Infiltration**



# WetlandMod – Non-proprietary Biofiltration Design



Minimal Footprint

Maximized Surface Area













**Grate Type with  
Tree**



**Grate Type**



# Thank you!

Will Harris

National Sales Manager

[wharris@biocleanenvironmental.com](mailto:wharris@biocleanenvironmental.com)

Ph: (760) 433-7640

Website: [www.modularwetlands.com](http://www.modularwetlands.com)

Website: [www.biocleanenvironmental.com](http://www.biocleanenvironmental.com)

