



Green Infrastructure Workshop – April 25, 2016

Green Infrastructure Plans and Programs: What Will Agencies Need to Do?

Jill Bicknell, P.E., EOA, Inc.

Assistant Program Manager
Santa Clara Valley Urban Runoff Pollution
Prevention Program

Presentation Overview

- Green Infrastructure Plans
 - Objectives
 - GI Framework
 - Required Elements
- Challenges and Approaches
 - Plan Development
 - Coordination with Other Planning Efforts
 - Education and Outreach
 - SCVURPPP Assistance
 - Implementation

Green Infrastructure Plan Objectives

- Long range plan to include LID measures in public streets, parking lots, buildings, parks, etc
- “Disconnect” and/or treat runoff from impervious surfaces
- Reduce adverse water quality impacts of urbanization and urban runoff over long term
- Help achieve reduction in PCB and mercury loads and meet TMDL requirements

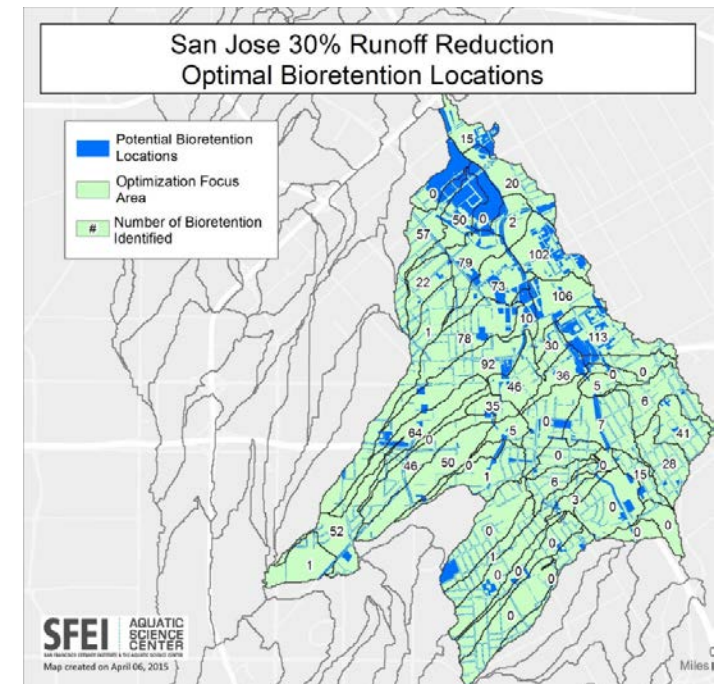
GI Framework

- Prepare Framework (work plan) for approval by Permittee's governing body, mayor or city/county manager by June 30, 2017
 - Framework elements:
 - Statement of purpose
 - Tasks and timeframes
 - Selected analytical tools
 - Plans/policies/specs to be updated
- ❖ Key task: Education of and buy-in from department staff and elected officials



GI Plan Elements

- Mechanism to prioritize and map areas for potential and planned projects over specified time-frames (2020, 2030, 2040)
 - Prioritization criteria
 - Treatment opportunities
 - Maps and lists of potential GI projects
- ❖ Key task: selection of appropriate tool(s) based on municipality's available data and resources



GreenPlan-IT Tool Output

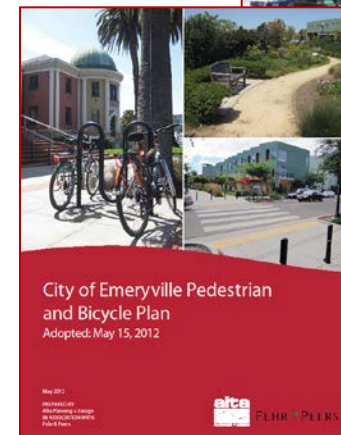
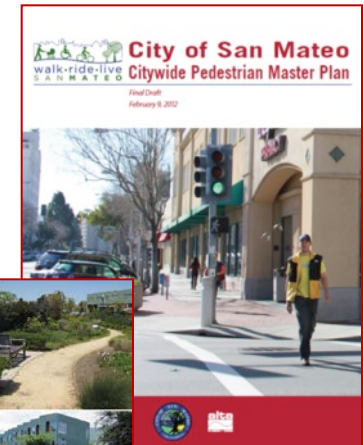
GI Plan Elements, cont.

- Targets for amount of impervious surface retrofitted by 2020, 2030 and 2040
- Process for tracking/mapping completed projects
- Guidelines for streetscape and project design (incorporating travel modes, public space, urban forestry, and stormwater capture/treatment)
- Standard specifications, design details, and sizing methodology



GI Plan Elements, cont.

- Planning documents updated to incorporate GI requirements and work plan for future updates
- Work plan to complete prioritized projects
- Evaluation of funding options
- Adopted policies, ordinances



Complete GI Plan by September 2019



Key Challenges – GI Plan Development

- Mapping/prioritizing locations for and types of GI projects, due to lack of sufficient data
- Coordination with and updates to a myriad of related municipal plans
- Getting buy-in from municipal departments, elected officials
 - Commitment to implementation of future projects
 - Acceptance of new design standards/specifications



Approaches – GI Plan Development

- Select appropriate tools for identification and prioritization of GI projects in each municipality
- Collaborate on GI Plan elements at the county-wide and regional level
- Develop schedule and strategy for related plan updates
- Conduct a comprehensive outreach program throughout the process

Coordination with Other Local Planning Efforts

- Examples of related plans:
 - General Plan
 - Specific or Neighborhood Plan
 - Active Transportation Plan
 - Complete/Sustainable Streets Plan
 - Pavement Work Plan
 - Storm Drain Master Plan
 - Urban Forestry Plan
- ❖ Key task: Determine priority and schedule for completing plan updates

Education and Outreach

- Public outreach
 - General public
 - Consultant/Developer community
 - Municipal department and management staff
 - Elected officials
- ❖ Key task: Ongoing outreach to all audiences for acceptance and implementation of GI Plan
- ❖ Priority: Elected officials, department staff



Public Outreach- Martha Gardens Green Alleys



City of San Jose's
Green Streets &
Alleys Webpage:
www.sanjoseca.gov/index.aspx?nid=4781



City of San Mateo's "Taste and Talk" Series

TASTE AND TALK SERIES



The City is hosting a series of speaker forums that continues their commitment to developing streets that are safe for our children and meet the needs of our many commuters. These forums will provide education on various topics as well as give you a chance to provide your input on what improvement you wish to see in the future. **Join us for one or more evenings of great food and great speakers.**

SUSTAINABLE STREETS CITY OF SAN MATEO

Sex, Neuroscience and Walkable Communities

Presented by: Jeffrey Tumin from Nelson\Nygaard
Thursday, January 9, 2014, 6:00-7:30pm
Hero's City, Draper University
55 East 3rd Ave, San Mateo

How are cities across North America making the most efficient use of their limited transportation resources? How are they achieving larger job creation, resilience, public health, equity and happiness goals? National sustainable transportation expert Jeff Tumin offers a big-picture approach to these issues that will help the audience better understand the broader movement toward sustainable communities.

The Key to Complete Streets and How to Unlock its Powers

Presented by: Paul Zykofsky from Local Government Commission & Michael Moule from Nelson\Nygaard
Thursday, February 6, 2014, 6:00-7:30pm
Oak Room, Public Library
55 West 3rd Ave, San Mateo

Complete Streets are streets for everyone. They are designed and operated to enable safe access for all users, allowing people of all ages and abilities to move along and across the street. National Complete Streets workshop facilitators Michael Moule and Paul Zykofsky will tell us what this policy is all about and how it can transform the way we think about our city's streets.

Greening the Street Involves more than New Trees

Presented by: Phil Erickson from Community Design & Architecture
Wednesday, March 5, 2014, 6:00-7:30pm
Hero's City, Draper University
55 East 3rd Ave, San Mateo

Green Streets manage stormwater runoff as a resource rather than a waste through permeable materials, landscaped planters and swales. They also have great social value and are a great complement to Complete Streets. Come join nationally renowned urban designer Phil Erickson to hear the latest about this concept and how it applies to San Mateo.

Completing the Transportation Network by Seeing the Bigger Picture

Presented by: Jeffrey Tumin from Nelson\Nygaard & Thomas Kronemeyer from Community Design & Architecture
Thursday, April 10, 2014, 6:00-7:00pm
Oak Room, Public Library
55 West 3rd Ave, San Mateo

As communities turn from sprawl towards retrofitting existing districts and corridors, misfits between street and land use types often compromise livability, sustainability and economic development. Learn through this interactive discussion facilitated by Jeff Tumin and urban designer Thomas Kronemeyer how some cities have responded by planning beyond the conventional street classification system and are implementing innovative streets with flexible uses.

Upcoming Forums:

- The Solid Link between Transportation and Health
- The Quality Solid Link between Transportation and Land Use
- Kick-Starting Change with Innovative Bike and Pedestrian Solutions
- The Dark Truth and the Bright Future of Parking Policies
- Public Spaces in Complete Streets
- Safer Routes to Schools and Transit
- The Evolution of Streets in San Mateo

To RSVP for the series and for more information about the Sustainable Streets Plan, please visit: www.sustainablestreetsanmateo.com

Preguntas? Para más información en Español, haga favor de llamar al 650.522.7300. 有任何問題嗎? 如有需要取進一步的中文資訊, 請致電 650.522.7300. In compliance with the Americans with Disabilities Act, those requiring accommodation for this meeting should notify Public Works 24 hours prior to the meeting at 650.522.7300.

For general information, please contact:
Ken Chin, Project Manager
650.522.7313
kchin@cityofsanmateo.org



- 10-12 open public forums
- Series topics included issues related to pedestrians, bicyclists, transit, trucks, level of service, street classification, green streets, ADA compliance and emergency services



SUSTAINABLE STREETS CITY OF SAN MATEO

SCVURPPP Assistance

- Guidance and templates for GI Plan and Framework elements
- Model GI language for related plans, policies and ordinance updates
- Guidelines, standards and specs for GI projects
- Outreach and workshops at countywide level, and materials for use at the local level
- Mapping, tracking, and reporting tools
- Stormwater Resource Plan – countywide effort with Water District to identify & prioritize projects

Early Implementation

- Prepare and maintain list of planned GI projects and projects that have potential for GI measures
 - Conduct review of CIP projects to look for GI opportunities
 - Where not practicable, document reasons why
- Submit list with each Annual Report (starting 9/16)
- ❖ Key: Use consistent process and criteria for determining practicability of GI measures
- ❖ Key: Workshops to train agency staff and regular communication among departments

Key Challenges – GI Implementation

- Funding
 - Capital costs
 - O&M costs (not typically covered by grants)
 - Don't want to divert funds from road maintenance
- Constraints within public right-of-way (limited space, existing grades, utility conflicts)
- Maintenance responsibility
- Public support/acceptance
 - May need increased local funding
 - Changes to streetscape (e.g. loss of lanes, parking)
- Integration into agency's way of doing business

“To Do” List

- May-June 2016
 - Form a “Green Team” and begin meeting
 - Discuss process for CIP project review and begin analysis
 - Provide training to department staff
 - Assess data available for GI planning
 - Identify relevant plans and scheduled updates
 - Begin outreach to elected officials

“To Do” List

- July-December 2016
 - Report on CIP project review findings (9/30/16)
 - Get support from elected officials
 - Develop draft GI Plan Framework and get input from management staff
 - Determine schedule for Framework approval
 - Collect data and maps for GI Plan preparation
 - Begin relevant plan updates as needed
 - Continue education and outreach (coordinate with SCVURPPP)

“To Do” List

- January-June 2017
 - Begin preparing information for the GI Plan
 - Analyze GI funding options
 - Participate in SCVURPPP process to develop and adopt GI design guidelines
 - Review policies and ordinances for adequacy
 - Participate in SCVURPPP development of tracking and reporting methods
 - Continue education and outreach
 - Complete and approve Framework (by 6/30/17)

Questions?



Jill Bicknell, P.E.

408-720-8811 x1

jcbicknell@eoainc.com